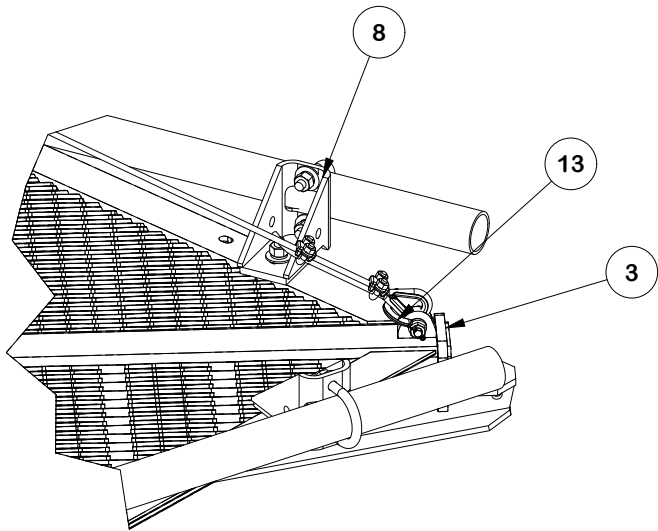
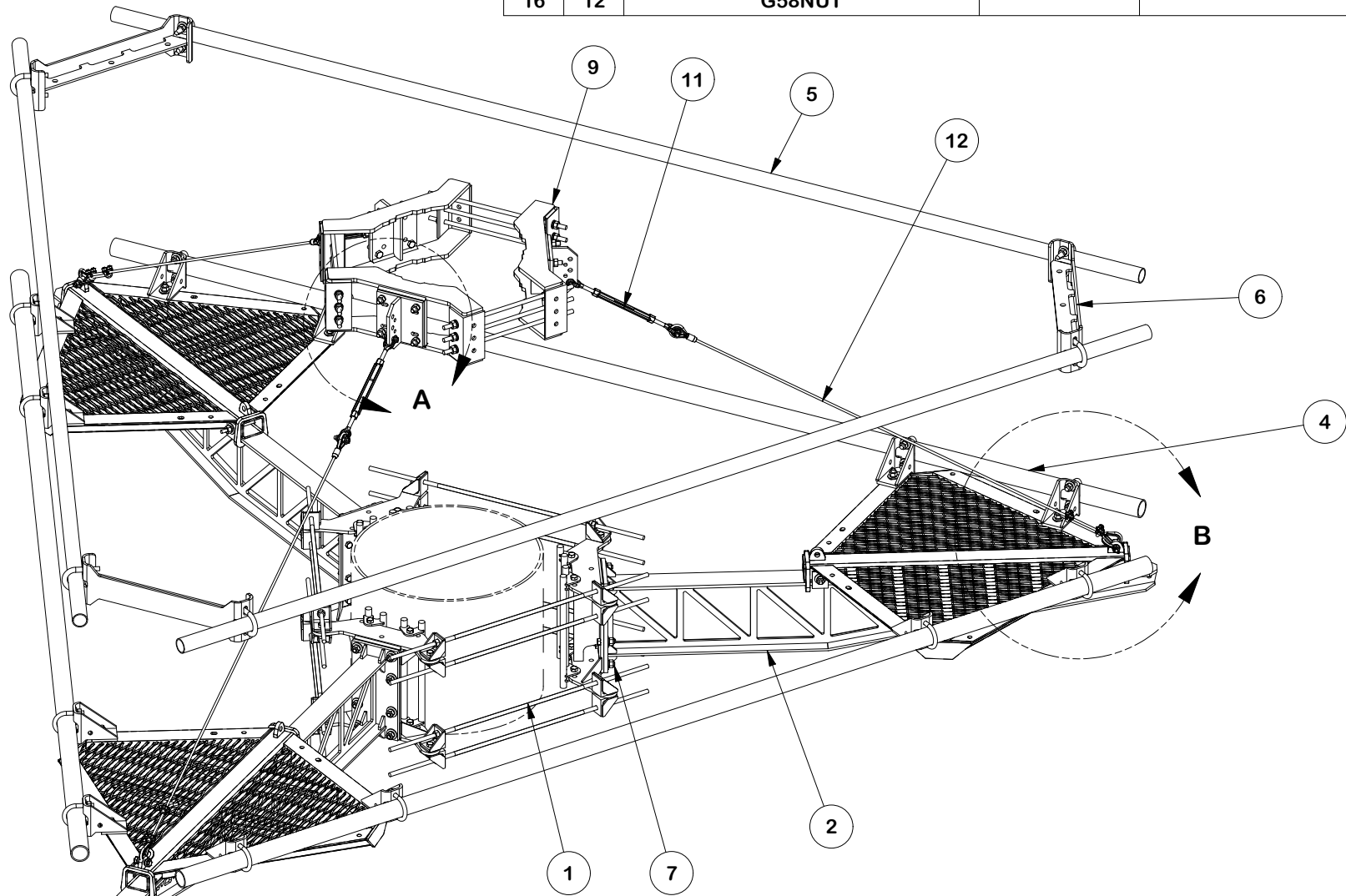


DETAIL A



DETAIL B

FINISH:
HOT DIP GALVANIZED.

PARTS LIST								
ITEM	QTY	PART NO.	BOX NO.	PART DESCRIPTION	LENGTH	UNIT WT.	NET WT.	
1	1	FLX3-HD		FLEXIBLE RING MOUNT 3-SIDED HEAVY DUTY ASSEMBLY		378.00	378.00	
2	3	X-LPP-SA14		SIDE ARM WELDMENT FOR 14' LOW PROFILE PLATFORM		151.68	455.03	
3	3	X-LPP-CW		LOW PROFILE PLATFORM CORNER WELDMENT		198.75	596.26	
4	3	P30180		2-7/8" O.D. x 180" SCH. 40 PIPE (A53 Gr.B Fy=35 ksi min.)	180 in	87.10	261.30	
5	3	P2180		2-3/8" OD X 180" Sch 40 Galvanized Pipe (A53 Gr.B Fy=35 ksi min.)		59.59	178.77	
6	3	F3HR	P-F3HR	THREE SIDED CORNER WELDMENT KIT		33.18	99.53	
7	3	LPPSA-HW	P-LPPSA-HW	TRUSS ARM CONNECTION HARDWARE		4.14	12.43	
8	3	FCWHW	P-FCWHW	FORTRESS CORNER WELDMENT HARDWARE KIT		42.93	128.79	
9	1	LWRM		UNIVERSAL RING MOUNT		266.93	266.93	
10	3	X-TBW		FORTRESS T-BRACKET WELDMENT		13.60	40.80	
11	3	320601-I		5/8" TURNBUCKLE		2.63	7.89	
12	3	CK-3815		3/8" X 15'-0" CABLE KIT		8.56	25.68	
13	3	320751-I		1/2" CHAIN SHACKLE		0.76	2.29	
14	12	G58234		5/8" UNC HEX BOLT (A325)	2 3/4 in	0.36	4.27	
15	12	G58LW		5/8" HDG LOCKWASHER		0.03	0.31	
16	12	G58NUT		5/8" HDG HEAVY 2H HEX NUT		0.13	1.56	
							TOTAL WT. #	2459.16

TOLERANCE NOTES

TOLERANCES ON DIMENSIONS, UNLESS OTHERWISE NOTED ARE:
SAWED, SHEARED AND GAS CUT EDGES ($\pm 0.030"$)
DRILLED AND GAS CUT HOLES ($\pm 0.030"$) - NO CONING OF HOLES
LASER CUT EDGES AND HOLES ($\pm 0.010"$) - NO CONING OF HOLES
BENDS AND ANGLES ARE $\pm 1/2$ DEGREE
ALL OTHER MACHINING ($\pm 0.030"$)
ALL OTHER ASSEMBLY ($\pm 0.060"$)

PATENT INFORMATION: WWW.SITEPRO1.COM/PATENTS

PROPRIETARY NOTE:
THE DATA AND TECHNIQUES CONTAINED IN THIS DRAWING ARE PROPRIETARY INFORMATION OF VALMONT INDUSTRIES AND CONSIDERED A TRADE SECRET. ANY USE OR DISCLOSURE WITHOUT THE CONSENT OF VALMONT INDUSTRIES IS STRICTLY PROHIBITED.

DESCRIPTION
15' FLEX Fortress™ TRI-PLATFORM MOUNT
WITH SUPPORT RAIL
(NO PIPE/HARDWARE)

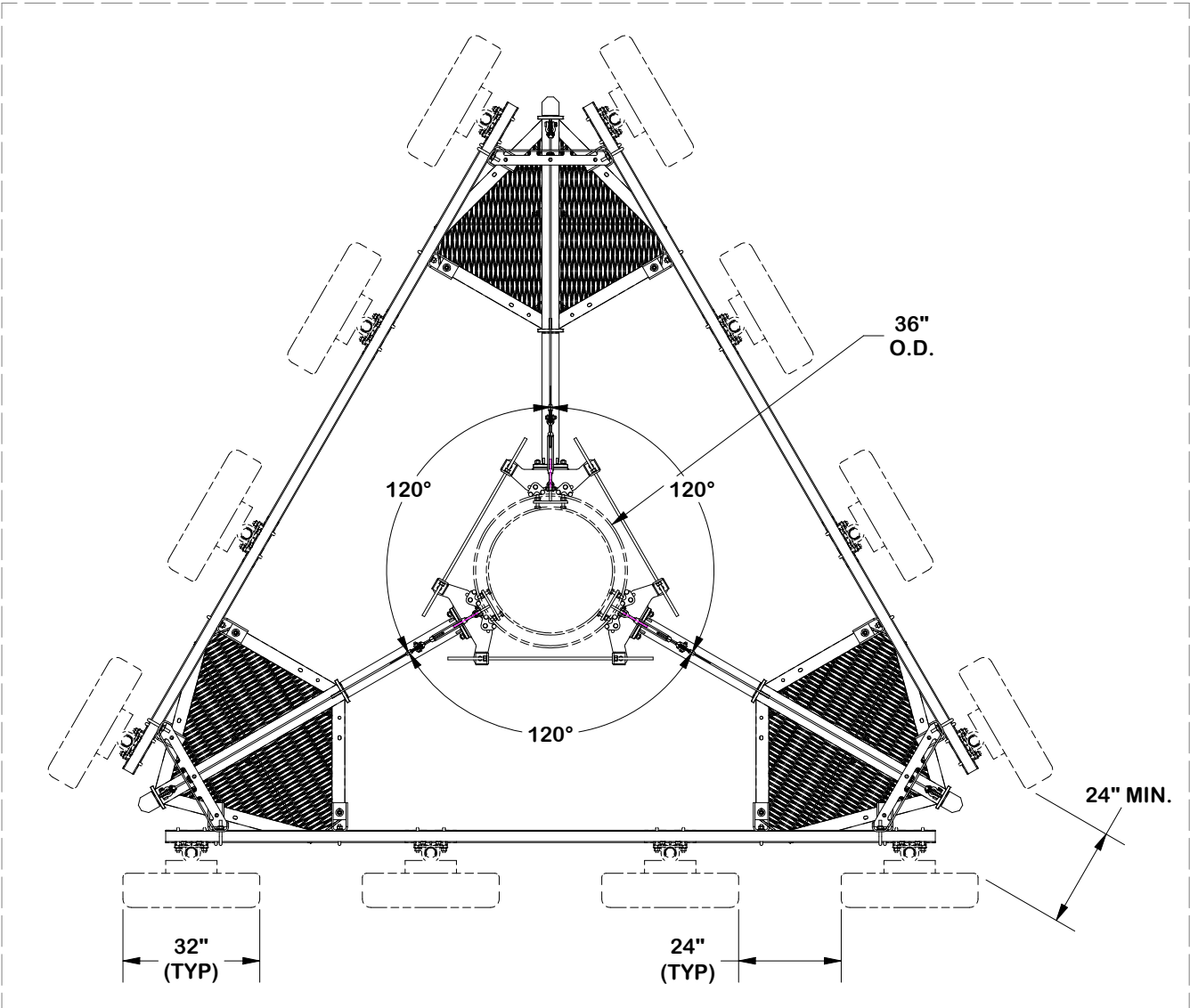
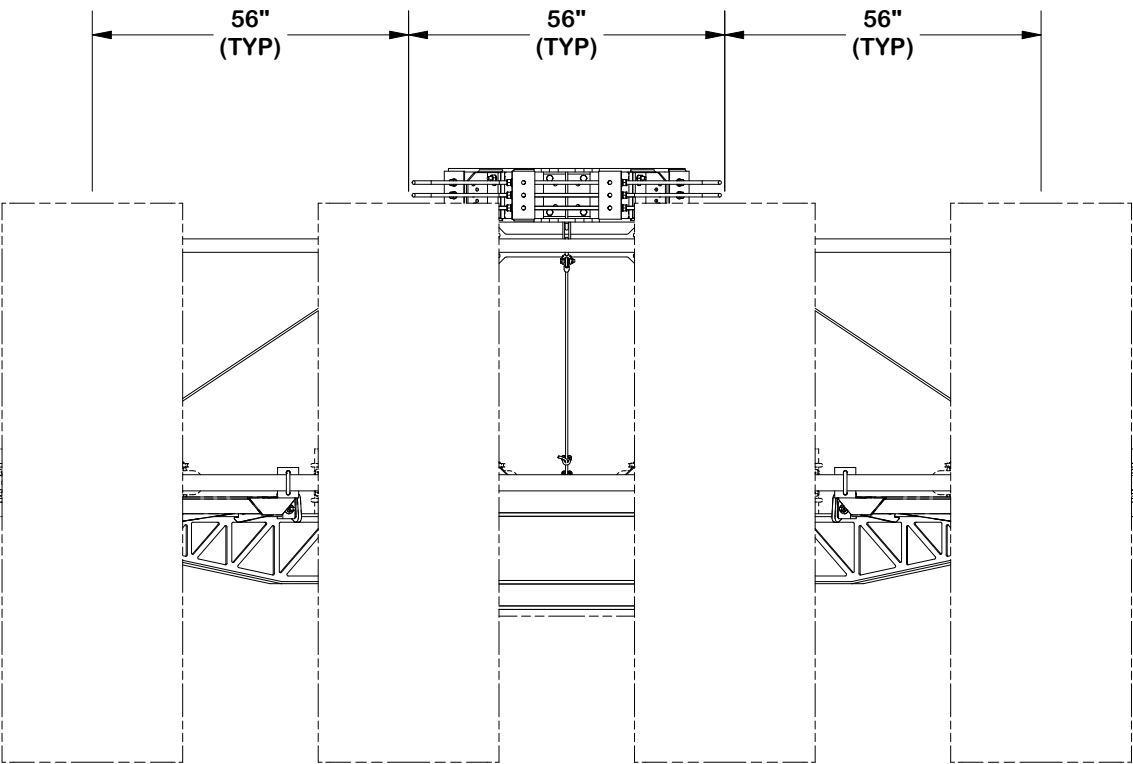
CPD NO. SP1		DRAWN BY ADB 1/8/2025		ENG. APPROVAL 1/15/2025	
CLASS 87	SUB 02	DRAWING USAGE CUSTOMER		CHECKED BY CSL	1/15/2025



Engineering
Support Team:
sp1engineering@valmont.com

PART NO. FX3P14-NPNH	1 OF 19 PAGE
DWG. NO. FX3P14-NPNH	

4 ANTENNA FORTRESS LAYOUT



SEPARATION GUIDELINE

TOLERANCE NOTES

TOLERANCES ON DIMENSIONS, UNLESS OTHERWISE NOTED ARE:
SAWED, SHEARED AND GAS CUT EDGES ($\pm 0.030"$)
DRILLED AND GAS CUT HOLES ($\pm 0.030"$) - NO CONING OF HOLES
LASER CUT EDGES AND HOLES ($\pm 0.010"$) - NO CONING OF HOLES
BENDS AND ANGLES ARE $\pm 1/2$ DEGREE
ALL OTHER MACHINING ($\pm 0.030"$)
ALL OTHER ASSEMBLY ($\pm 0.060"$)

PATENT INFORMATION: WWW.SITEPRO1.COM/PATENTS

PROPRIETARY NOTE:
THE DATA AND TECHNIQUES CONTAINED IN THIS DRAWING ARE PROPRIETARY INFORMATION OF VALMONT INDUSTRIES AND CONSIDERED A TRADE SECRET. ANY USE OR DISCLOSURE WITHOUT THE CONSENT OF VALMONT INDUSTRIES IS STRICTLY PROHIBITED.

DESCRIPTION
15' FLEX FORTRESS™ TRI-PLATFORM MOUNT
WITH SUPPORT RAIL
(NO PIPE/HARDWARE)

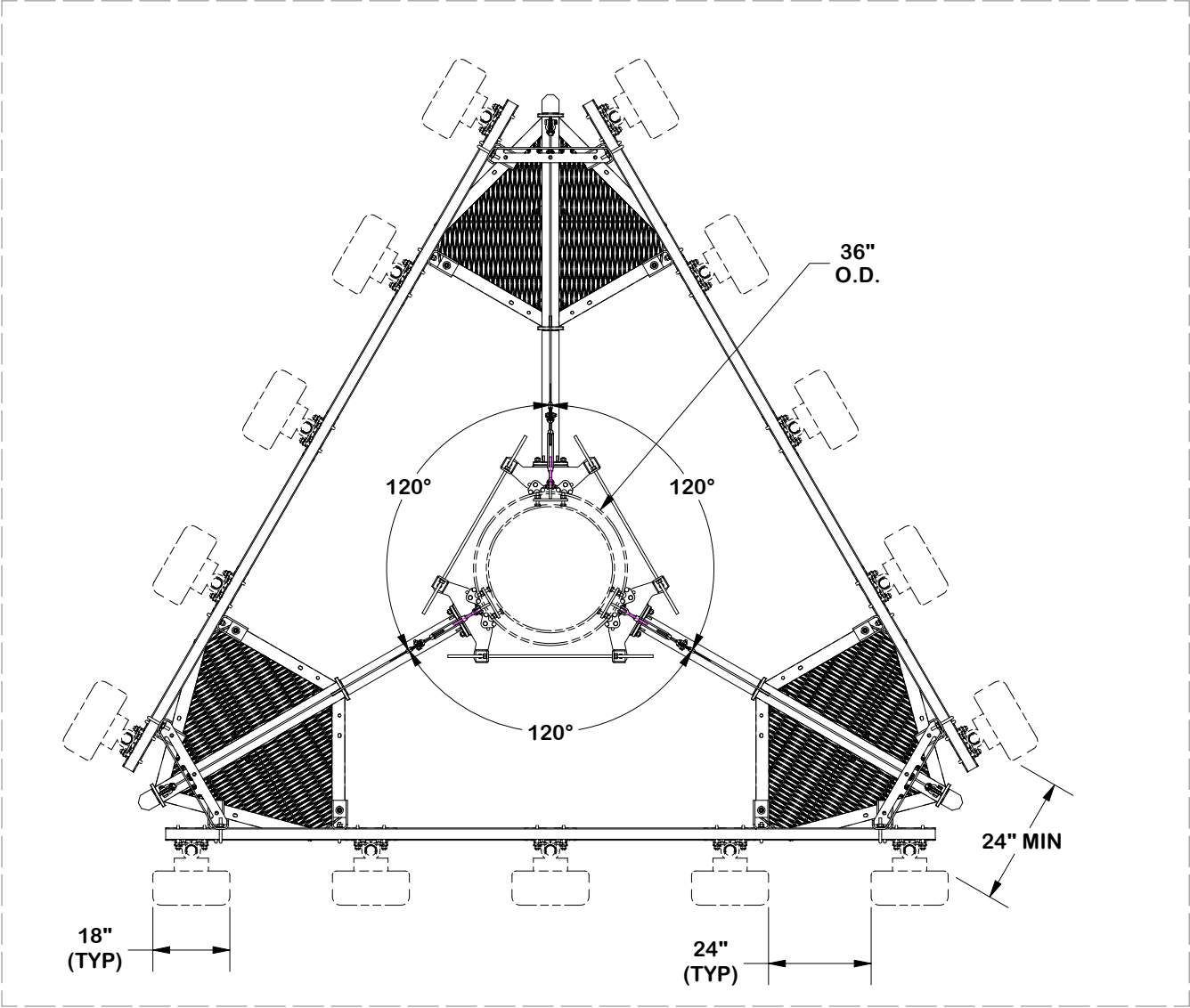
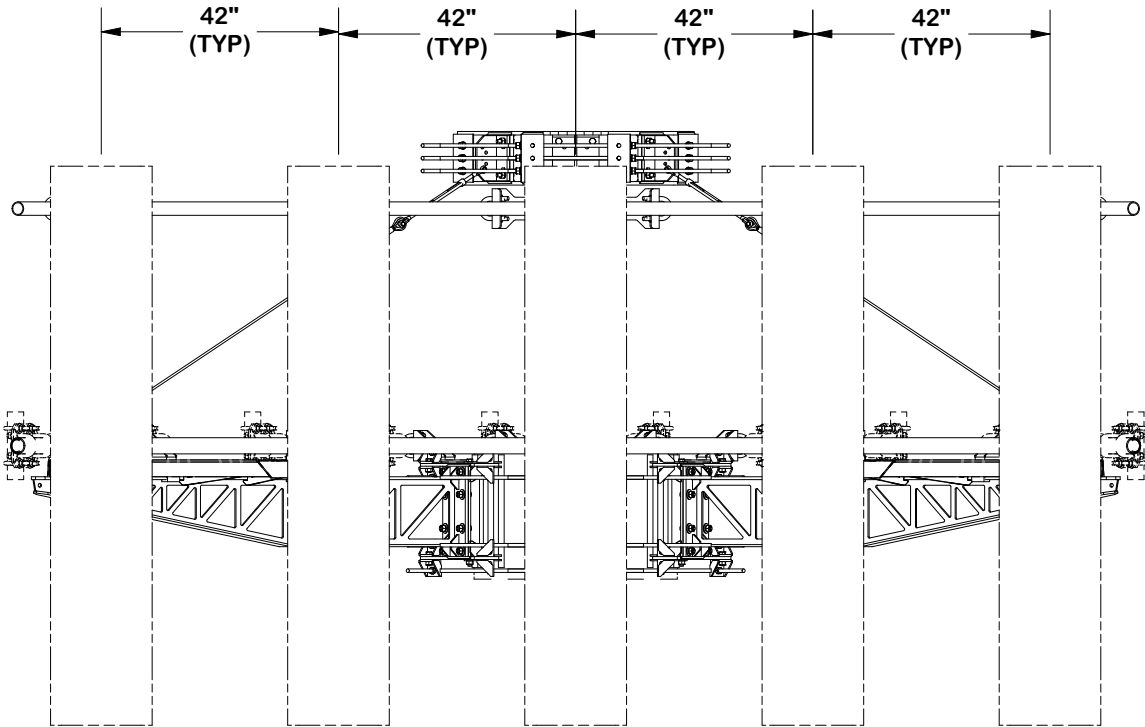
CPD NO. SP1		DRAWN BY ADB 1/8/2025		ENG. APPROVAL 1/15/2025	
CLASS 87	SUB 02	DRAWING USAGE CUSTOMER		CHECKED BY CSL 1/15/2025	



Engineering
Support Team:
sp1engineering@valmont.com

PART NO.	FX3P14-NPNH
DWG. NO.	FX3P14-NPNH

5 ANTENNA FORTRESS LAYOUT



SEPARATION GUIDELINE

TOLERANCE NOTES

TOLERANCES ON DIMENSIONS, UNLESS OTHERWISE NOTED ARE:
SAWED, SHEARED AND GAS CUT EDGES ($\pm 0.030"$)
DRILLED AND GAS CUT HOLES ($\pm 0.030"$) - NO CONING OF HOLES
LASER CUT EDGES AND HOLES ($\pm 0.010"$) - NO CONING OF HOLES
BENDS AND ANGLES ARE $\pm 1/2$ DEGREE
ALL OTHER MACHINING ($\pm 0.030"$)
ALL OTHER ASSEMBLY ($\pm 0.060"$)

PATENT INFORMATION: WWW.SITEPRO1.COM/PATENTS

PROPRIETARY NOTE:
THE DATA AND TECHNIQUES CONTAINED IN THIS DRAWING ARE PROPRIETARY INFORMATION OF VALMONT INDUSTRIES AND CONSIDERED A TRADE SECRET. ANY USE OR DISCLOSURE WITHOUT THE CONSENT OF VALMONT INDUSTRIES IS STRICTLY PROHIBITED.

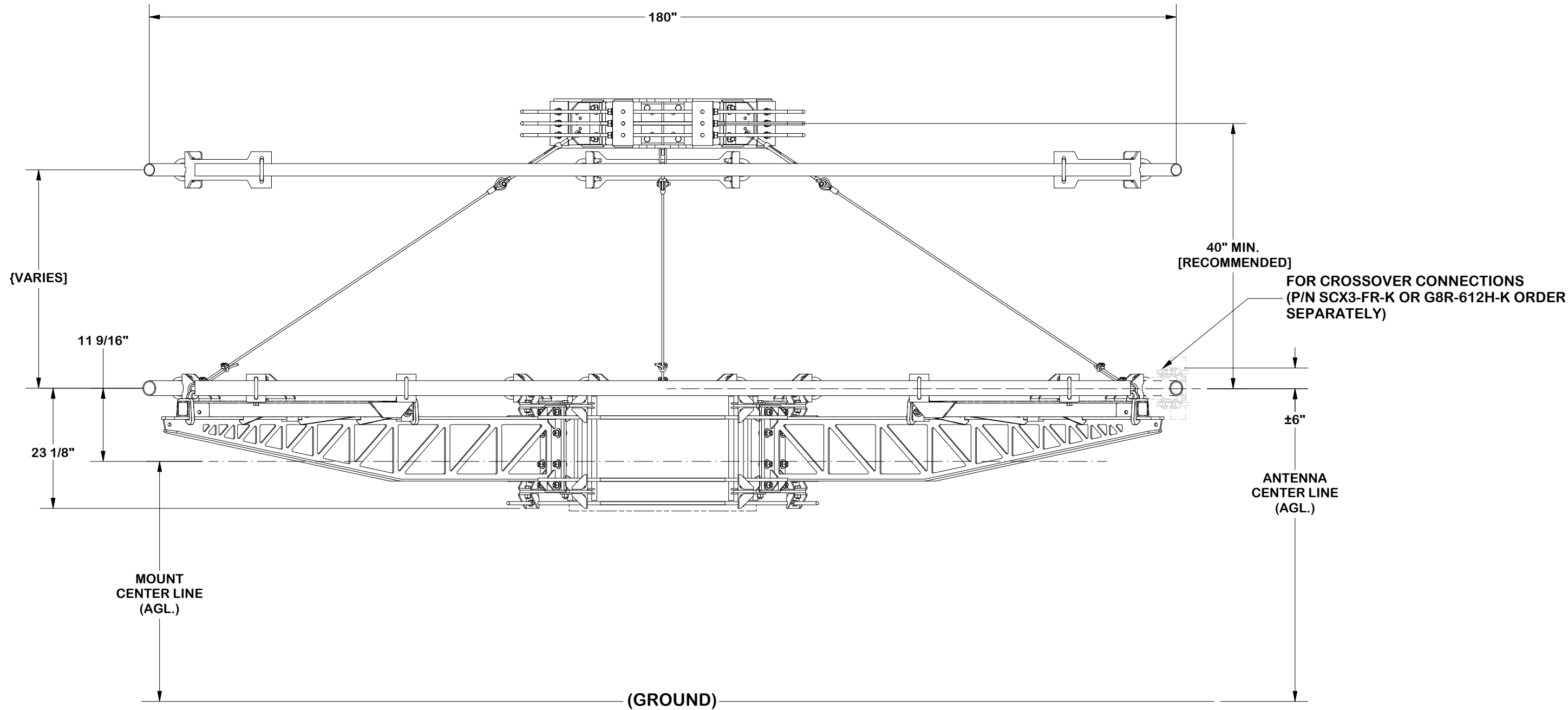
DESCRIPTION
15' FLEX FORTRESS™ TRI-PLATFORM MOUNT
WITH SUPPORT RAIL
(NO PIPE/HARDWARE)

CPD NO. SP1		DRAWN BY ADB 1/8/2025	ENG. APPROVAL 1/15/2025
CLASS 87	SUB 02	DRAWING USAGE CUSTOMER	CHECKED BY CSL 1/15/2025



Engineering
Support Team:
sp1engineering@valmont.com

PART NO. FX3P14-NPNH
DWG. NO. FX3P14-NPNH



MOUNTING GUIDELINE

TOLERANCE NOTES

TOLERANCES ON DIMENSIONS, UNLESS OTHERWISE NOTED ARE:
SAWED, SHEARED AND GAS CUT EDGES (± 0.030")
DRILLED AND GAS CUT HOLES (± 0.030") - NO CONING OF HOLES
LASER CUT EDGES AND HOLES (± 0.010") - NO CONING OF HOLES
BENDS AND ANGLES ARE ± 1/2 DEGREE
ALL OTHER MACHINING (± 0.030")
ALL OTHER ASSEMBLY (± 0.060")

PATENT INFORMATION: WWW.SITEPRO1.COM/PATENTS

PROPRIETARY NOTE:
THE DATA AND TECHNIQUES CONTAINED IN THIS DRAWING ARE PROPRIETARY INFORMATION OF VALMONT INDUSTRIES AND CONSIDERED A TRADE SECRET. ANY USE OR DISCLOSURE WITHOUT THE CONSENT OF VALMONT INDUSTRIES IS STRICTLY PROHIBITED.

DESCRIPTION
15' FLEX FORTRESS™ TRI-PLATFORM MOUNT
WITH SUPPORT RAIL
(NO PIPE/HARDWARE)

CPD NO. SP1		DRAWN BY ADB 1/8/2025	ENG. APPROVAL 1/15/2025
CLASS 87	SUB 02	DRAWING USAGE CUSTOMER	CHECKED BY CSL 1/15/2025

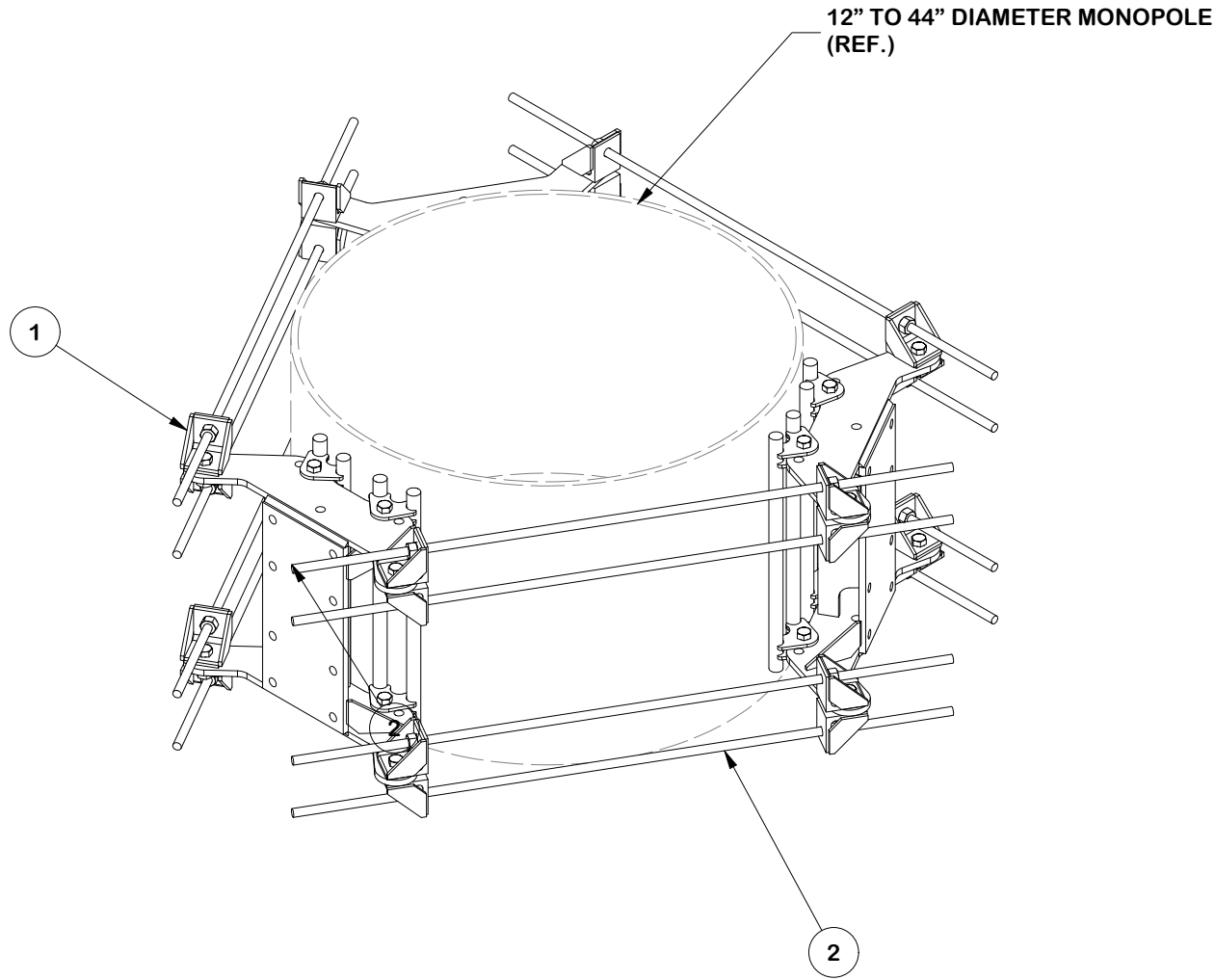
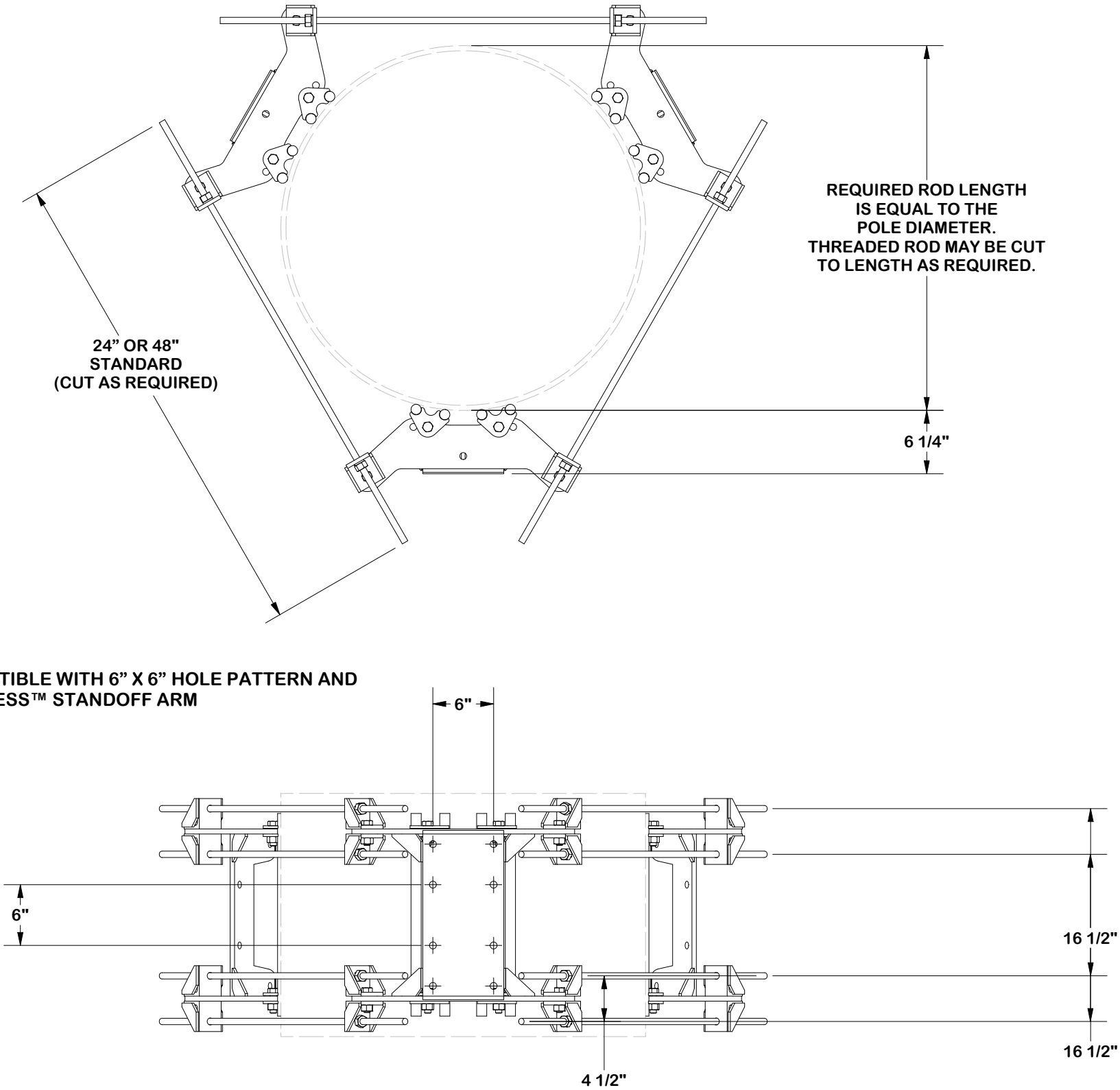


Engineering
Support Team:
sp1engineering@valmont.com


PART NO. FX3P14-NPNH	PAGE 4 OF 19
DWG. NO. FX3P14-NPNH	

HEAVY STAMP
PART NUMBER

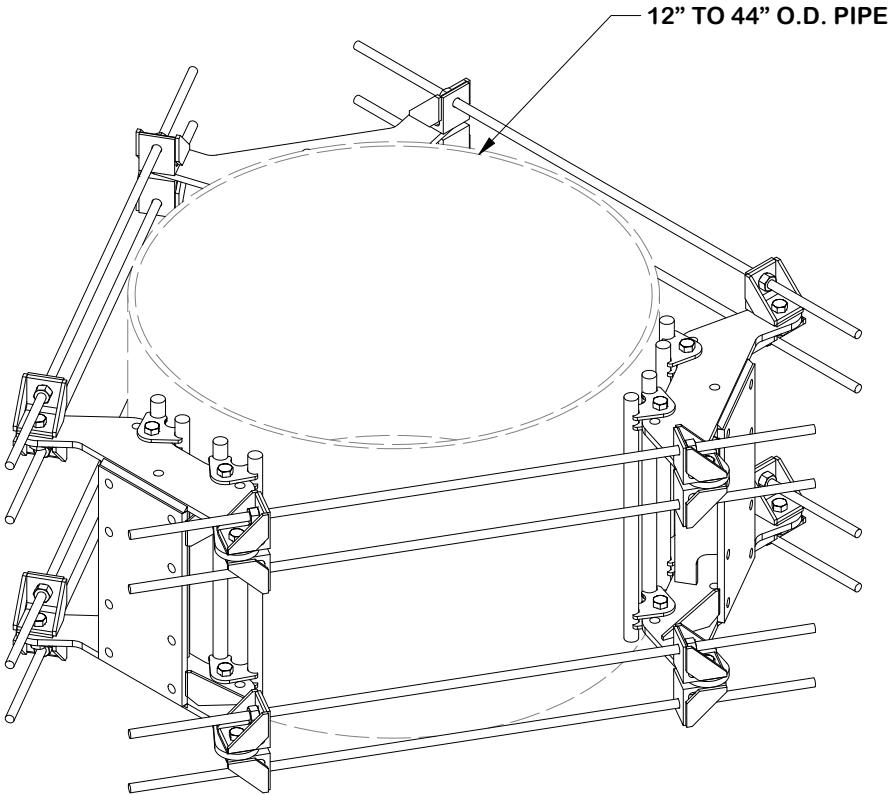
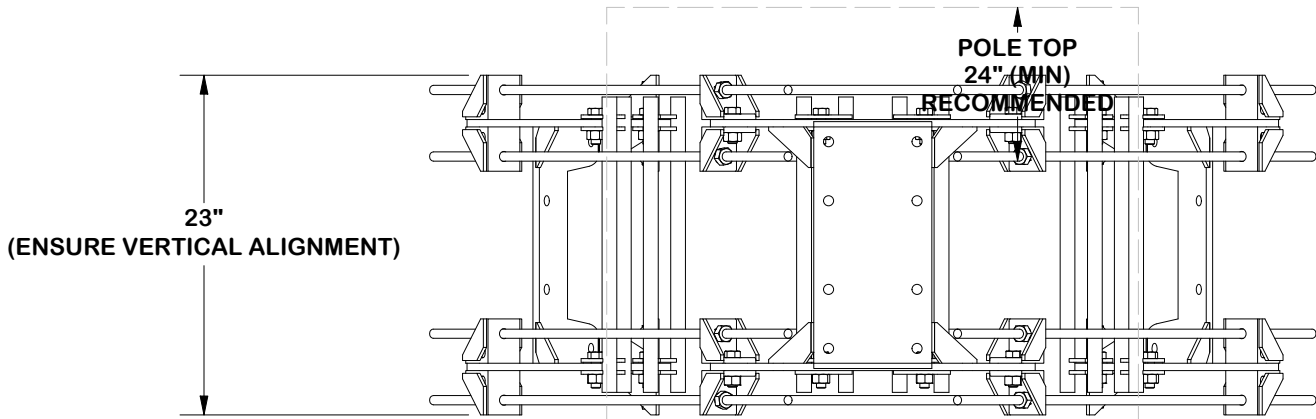
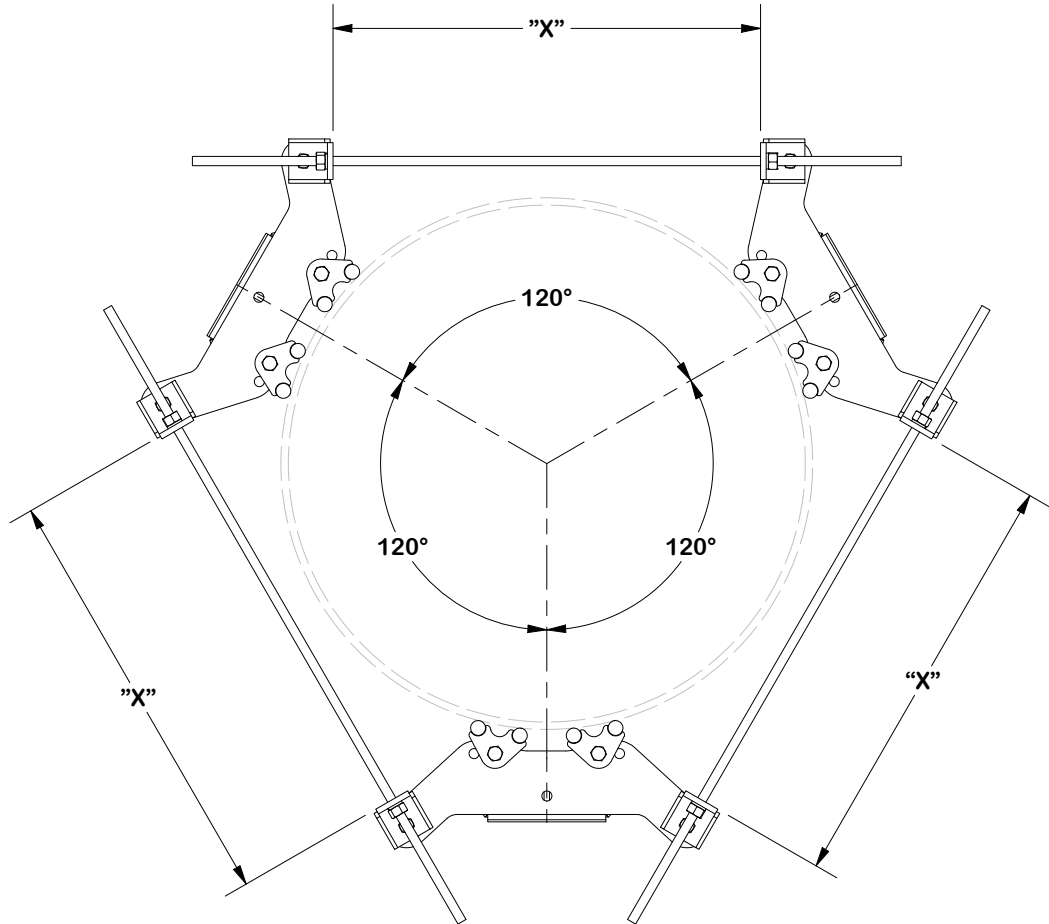
PARTS LIST						
ITEM	QTY	PART NO.	BOX NO.	PART DESCRIPTION	UNIT WT.	NET WT.
1	3	FLX-HDSS	P-FLX-HDSS	FLEXIBLE RING MOUNT HEAVY-DUTY SINGLE SECTOR ASSEMBLY	98.32	294.97
2	3	HDRM-HW	P-HDRM-HW	FLEXIBLE RING MOUNT HARWARE KIT	27.68	83.03
TOTAL WT. #						378.00




FINISH:
HOT DIP GALVANIZED.

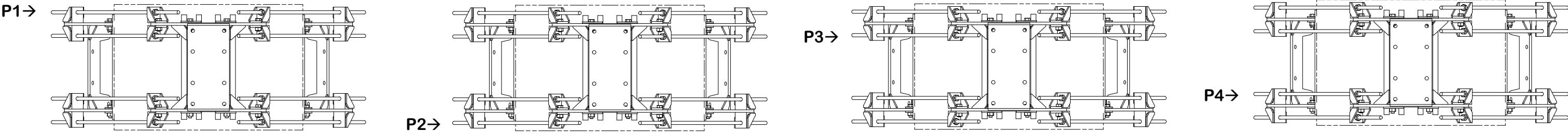
					TOLERANCE NOTES TOLERANCES ON DIMENSIONS, UNLESS OTHERWISE NOTED ARE: SAWED, SHEARED AND GAS CUT EDGES ($\pm 0.030''$) DRILLED AND GAS CUT HOLES ($\pm 0.030''$) - NO CONING OF HOLES LASER CUT EDGES AND HOLES ($\pm 0.010''$) - NO CONING OF HOLES BENDS AND ANGLES ARE $\pm 1/2$ DEGREE ALL OTHER MACHINING ($\pm 0.030''$) ALL OTHER ASSEMBLY ($\pm 0.060''$)		DESCRIPTION 15' FLEX FORTRESS™ TRI-PLATFORM MOUNT WITH SUPPORT RAIL (NO PIPE/HARDWARE)			<div><div><div>SITE PRO</div><div>1</div></div><div>Engineering Support Team: sp1engineering@valmont.com</div></div> <div>A valmont  COMPANY</div>					
A	CHANGED KITS			SP1	ADB	12/12/2024	PATENT INFORMATION: WWW.SITEPRO1.COM/PATENTS			CPD NO. SP1	DRAWN BY ADB 1/8/2025	ENG. APPROVAL 1/15/2025	PART NO. FLX3-HD	5 OF 19	
REV	DESCRIPTION OF REVISIONS			CPD	BY	DATE	PROPRIETARY NOTE: THE DATA AND TECHNIQUES CONTAINED IN THIS DRAWING ARE PROPRIETARY INFORMATION OF VALMONT INDUSTRIES AND CONSIDERED A TRADE SECRET. ANY USE OR DISCLOSURE WITHOUT THE CONSENT OF VALMONT INDUSTRIES IS STRICTLY PROHIBITED.			CLASS 87	SUB 02	DRAWING USAGE CUSTOMER	CHECKED BY CSL 1/15/2025		DWG. NO. FX3P14-NPNH
REVISION HISTORY															

NOTE:
ENSURE EQUAL DISTANCE
BETWEEN BRACKETS “X”
AND AT 120° APART

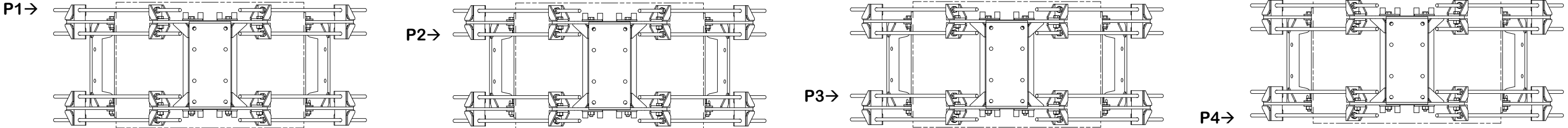


					<div>TOLERANCE NOTES</div> <div>TOLERANCES ON DIMENSIONS, UNLESS OTHERWISE NOTED ARE: SAWED, SHEARED AND GAS CUT EDGES (± 0.030") DRILLED AND GAS CUT HOLES (± 0.030") - NO CONING OF HOLES LASER CUT EDGES AND HOLES (± 0.010") - NO CONING OF HOLES BENDS AND ANGLES ARE ± 1/2 DEGREE ALL OTHER MACHINING (± 0.030") ALL OTHER ASSEMBLY (± 0.060")</div>					<div>DESCRIPTION</div> <div>15' FLEX FORTRESS™ TRI-PLATFORM MOUNT WITH SUPPORT RAIL (NO PIPE/HARDWARE)</div>					<div><div><div>SITE PRO</div><div>1</div></div><div>Engineering Support Team: sp1engineering@valmont.com</div></div> <div>A valmont  COMPANY</div>				
					CPD NO.		DRAWN BY		ENG. APPROVAL		PART NO.			PAGE 6 OF 19					
SP1		ADB 1/8/2025		1/15/2025		FLX3-HD													
CLASS		SUB		DRAWING USAGE		CHECKED BY		DWG. NO.											
87		02		CUSTOMER		CSL 1/15/2025		FX3P14-NPNH											
A					CHANGED KITS					SP1	ADB	12/12/2024	PATENT INFORMATION: WWW.SITEPRO1.COM/PATENTS						
REV					DESCRIPTION OF REVISIONS					CPD	BY	DATE	PROPRIETARY NOTE: THE DATA AND TECHNIQUES CONTAINED IN THIS DRAWING ARE PROPRIETARY INFORMATION OF VALMONT INDUSTRIES AND CONSIDERED A TRADE SECRET. ANY USE OR DISCLOSURE WITHOUT THE CONSENT OF VALMONT INDUSTRIES IS STRICTLY PROHIBITED.						
REVISION HISTORY																			

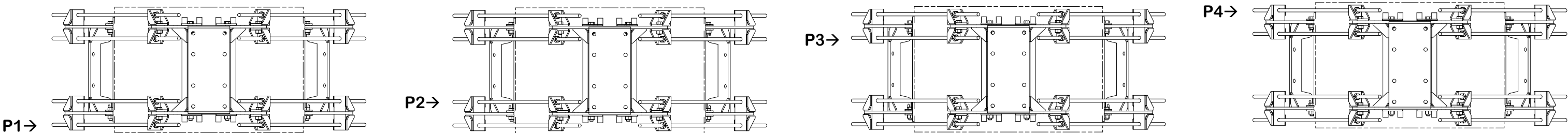
INSTALL ORDER



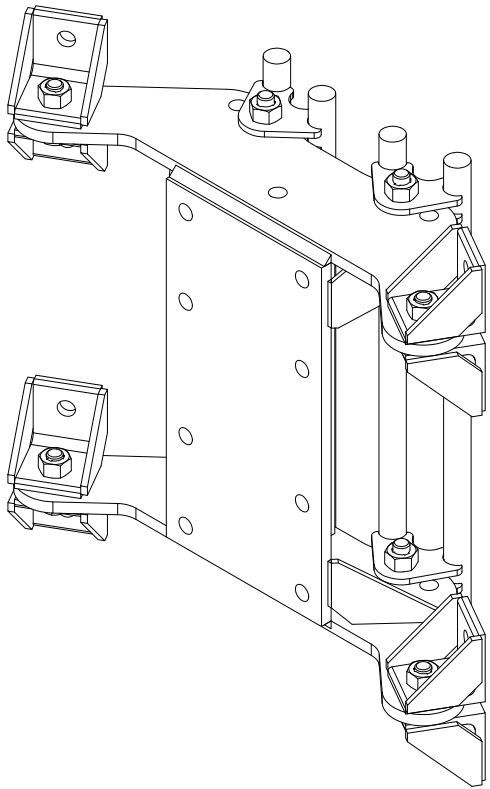
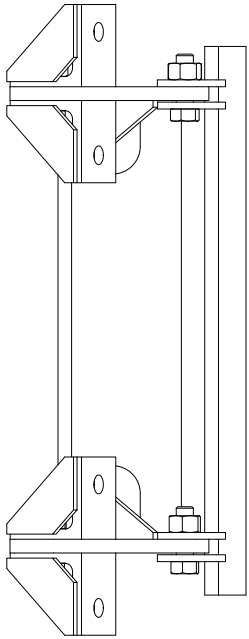
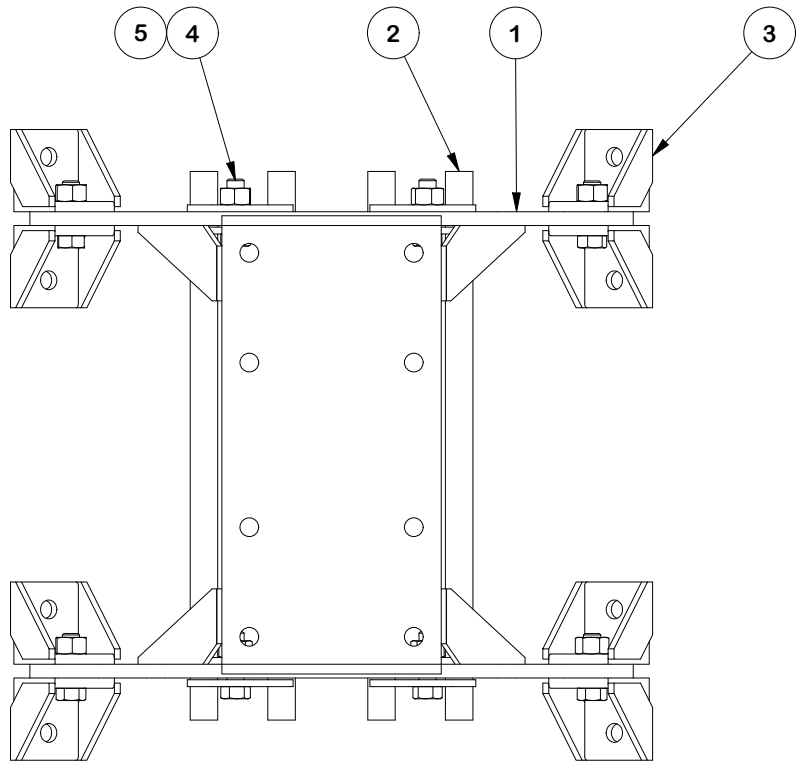
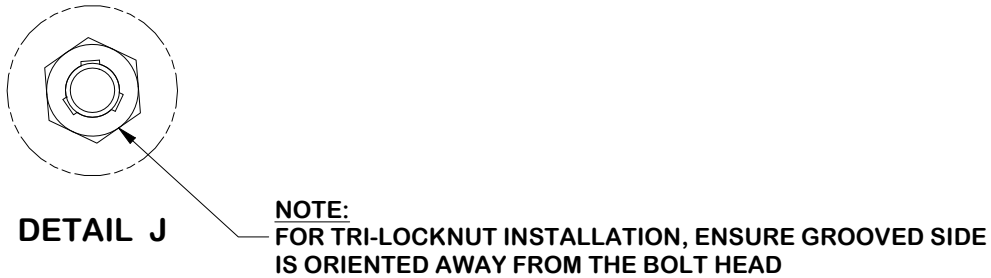
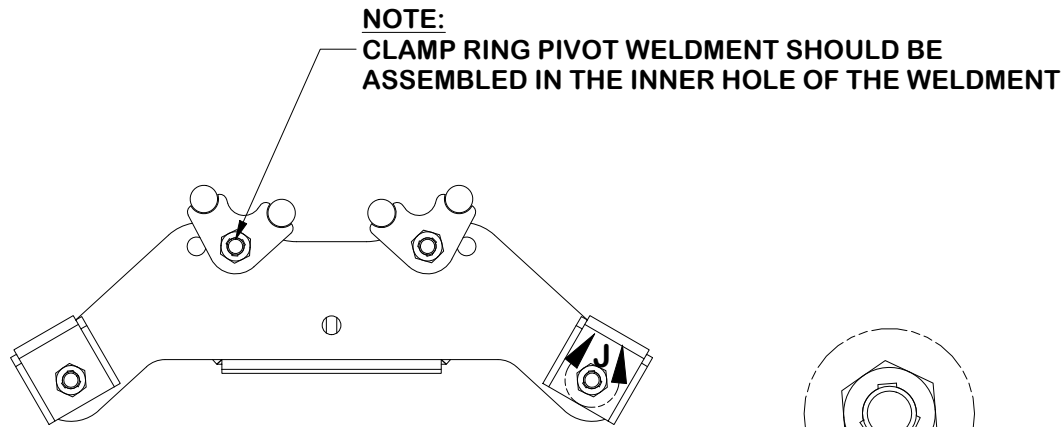
INITIAL TIGHTENING



FINAL TIGHTENING



					TOLERANCE NOTES		DESCRIPTION 15' FLEX FORTRESS™ TRI-PLATFORM MOUNT WITH SUPPORT RAIL (NO PIPE/HARDWARE)			<div><div>SITE PRO 1</div><div>A valmont COMPANY</div></div> <div>Engineering Support Team: sp1engineering@valmont.com</div>	
A	CHANGED KITS	SP1	ADB	12/12/2024	PATENT INFORMATION: WWW.SITEPRO1.COM/PATENTS		CPD NO. SP1	DRAWN BY ADB	1/8/2025	ENG. APPROVAL 1/15/2025	PART NO. FLX3-HD
REV	DESCRIPTION OF REVISIONS	CPD	BY	DATE	PROPRIETARY NOTE: THE DATA AND TECHNIQUES CONTAINED IN THIS DRAWING ARE PROPRIETARY INFORMATION OF VALMONT INDUSTRIES AND CONSIDERED A TRADE SECRET. ANY USE OR DISCLOSURE WITHOUT THE CONSENT OF VALMONT INDUSTRIES IS STRICTLY PROHIBITED.		CLASS 87	SUB 02	DRAWING USAGE CUSTOMER	CHECKED BY CSL	DWG. NO. FX3P14-NPNH
REVISION HISTORY											



PARTS LIST					
ITEM	QTY	PART NO.	PART DESCRIPTION	UNIT WT.	NET WT.
1	1	X-CR-HDW	HEAVY FLEXIBLE RING MOUNT	55.25	55.25
2	2	X-CR-PW20	20" CLAMP RING PIVOT WELDMENT	11.12	22.25
3	8	X-CR-AGW	ANGLE ON WELDMENT	2.20	17.57
4	8	G5802	5/8" x 2" HDG HEX BOLT GR5	0.27	2.16
5	8	G58TRI-LNUT	5/8" HDG HEAVY 2H TRI-LOCK NUT	0.14	1.10
TOTAL WT. #					98.32

FINISH:
HOT DIP GALVANIZED.

TOLERANCE NOTES

TOLERANCES ON DIMENSIONS, UNLESS OTHERWISE NOTED ARE:
SAWED, SHEARED AND GAS CUT EDGES ($\pm 0.030"$)
DRILLED AND GAS CUT HOLES ($\pm 0.030"$) - NO CONING OF HOLES
LASER CUT EDGES AND HOLES ($\pm 0.010"$) - NO CONING OF HOLES
BENDS AND ANGLES ARE $\pm 1/2$ DEGREE
ALL OTHER MACHINING ($\pm 0.030"$)
ALL OTHER ASSEMBLY ($\pm 0.060"$)

PATENT INFORMATION: WWW.SITEPRO1.COM/PATENTS

PROPRIETARY NOTE:
THE DATA AND TECHNIQUES CONTAINED IN THIS DRAWING ARE PROPRIETARY INFORMATION OF VALMONT INDUSTRIES AND CONSIDERED A TRADE SECRET. ANY USE OR DISCLOSURE WITHOUT THE CONSENT OF VALMONT INDUSTRIES IS STRICTLY PROHIBITED.

DESCRIPTION
15' FLEX FORTRESS™ TRI-PLATFORM MOUNT
WITH SUPPORT RAIL
(NO PIPE/HARDWARE)

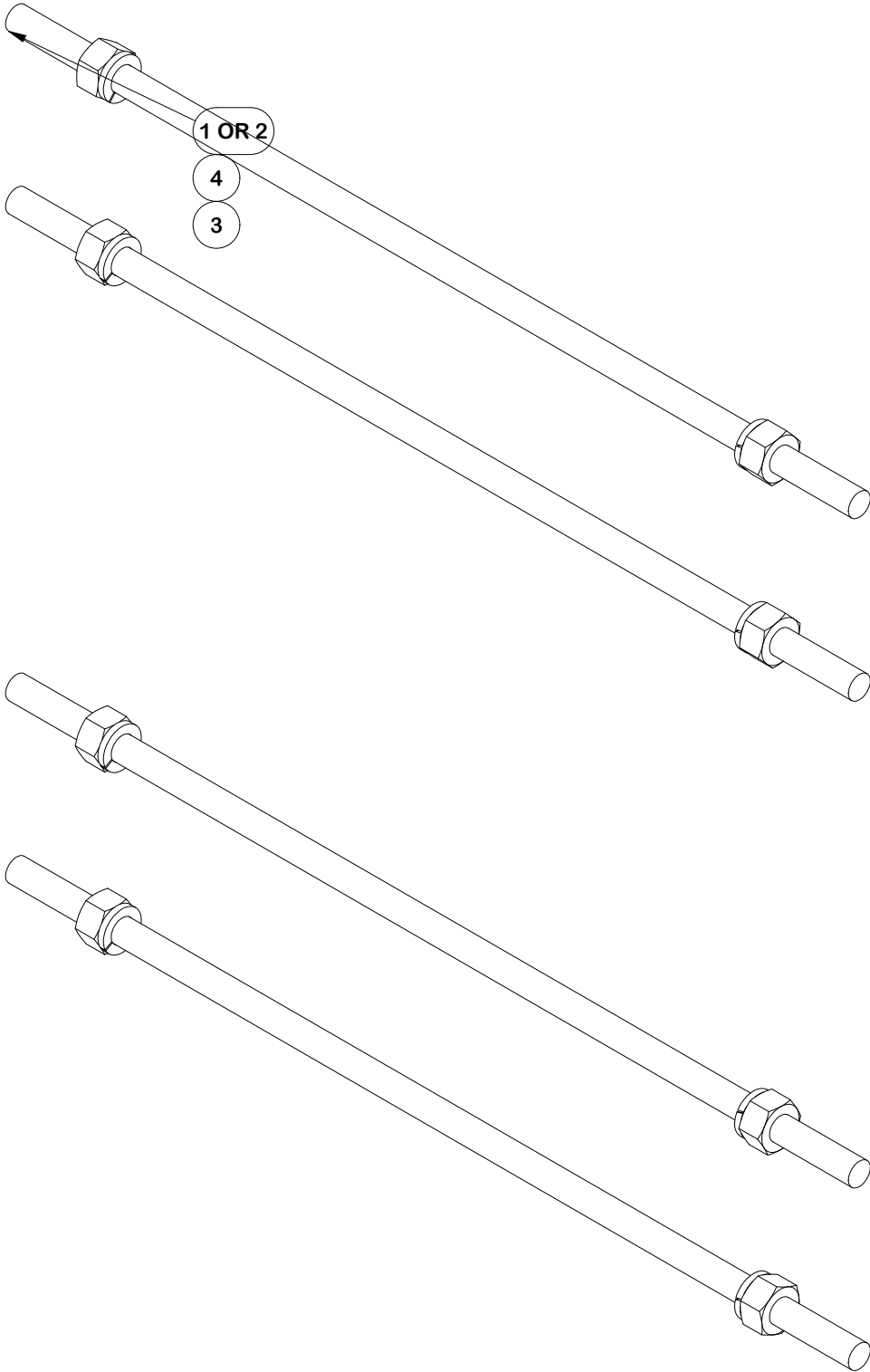
CPD NO. SP1		DRAWN BY ADB 1/8/2025		ENG. APPROVAL 1/15/2025	
CLASS 87	SUB 02	DRAWING USAGE CUSTOMER		CHECKED BY CSL	1/15/2025



Engineering
Support Team:
sp1engineering@valmont.com


A valmont COMPANY

PART NO. FLX-HDSS	8 OF 19 PAGE
DWG. NO. FX3P14-NPNH	

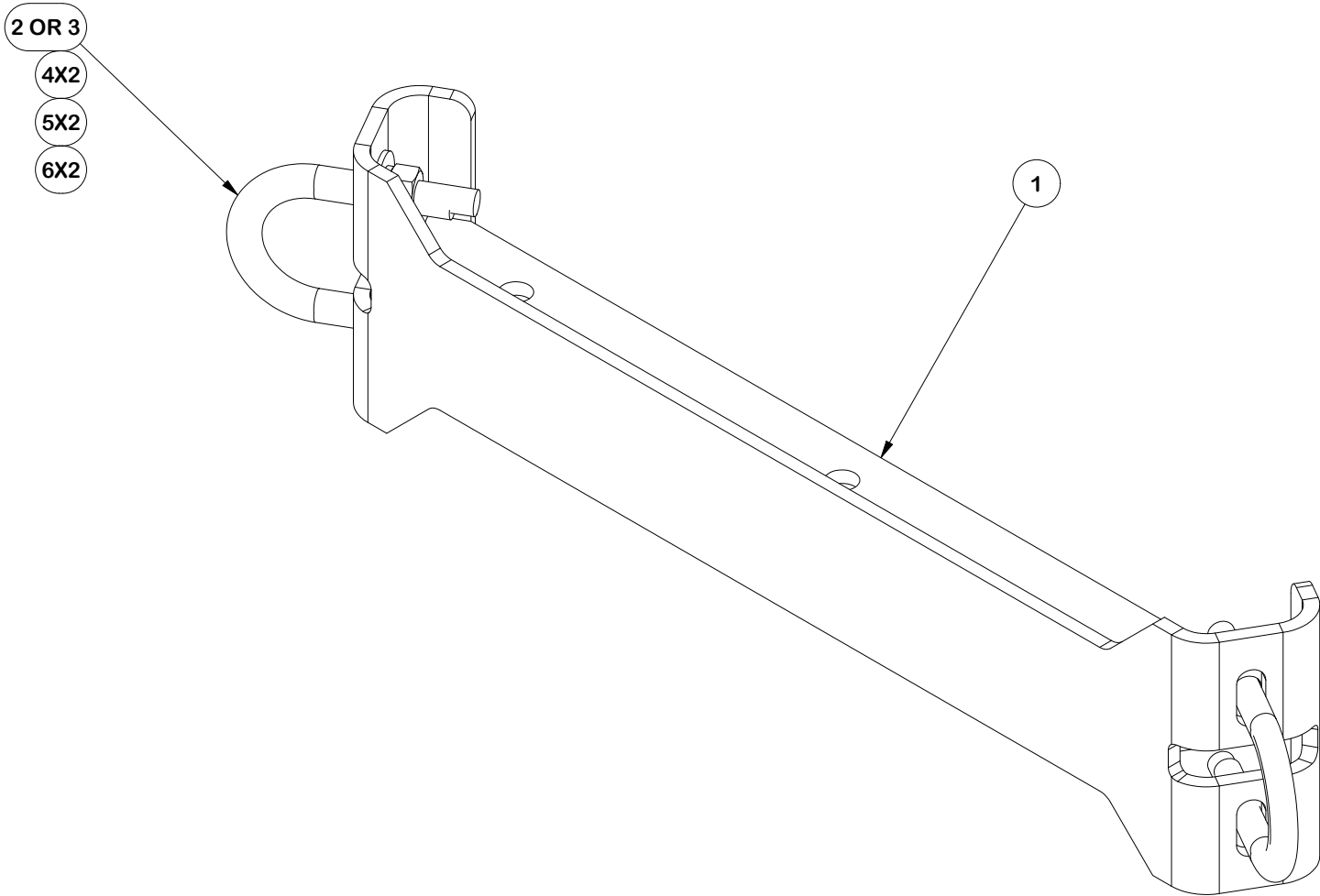


PARTS LIST					
ITEM	QTY	PART NO.	PART DESCRIPTION	UNIT WT.	NET WT.
1	4	G58R-48	5/8" X 48" GALV THREADED ROD	4.39	17.56
2	4	G58R-24	5/8" X 24" THREADED ROD (HDG.)	2.22	8.87
3	8	G58LW	5/8" HDG LOCKWASHER	0.03	0.21
4	8	G58NUT	5/8" HDG HEAVY 2H HEX NUT	0.13	1.04
TOTAL WT. #					28.30

FINISH:
HOT DIP GALVANIZED.

	<div>TOLERANCE NOTES</div> <div>TOLERANCES ON DIMENSIONS, UNLESS OTHERWISE NOTED ARE: SAWED, SHEARED AND GAS CUT EDGES ($\pm 0.030''$) DRILLED AND GAS CUT HOLES ($\pm 0.030''$) - NO CONING OF HOLES LASER CUT EDGES AND HOLES ($\pm 0.010''$) - NO CONING OF HOLES BENDS AND ANGLES ARE $\pm 1/2$ DEGREE ALL OTHER MACHINING ($\pm 0.030''$) ALL OTHER ASSEMBLY ($\pm 0.060''$)</div>			<div>DESCRIPTION</div> <div>15' FLEX FORTRESS™ TRI-PLATFORM MOUNT WITH SUPPORT RAIL (NO PIPE/HARDWARE)</div>			<div><div><div>SITE PRO</div><div>1</div></div><div>Engineering Support Team: sp1engineering@valmont.com</div><div>A valmont  COMPANY</div></div>				
	<div>PATENT INFORMATION: WWW.SITEPRO1.COM/PATENTS</div>			<div>CPD NO.</div> <div>SP1</div>	<div>DRAWN BY</div> <div>ADB 1/8/2025</div>		<div>ENG. APPROVAL</div> <div>1/15/2025</div>		<div>PART NO.</div> <div>HDRM-HW</div>		<div>PAGE</div> <div>9 OF 19</div>
	<div>PROPRIETARY NOTE: THE DATA AND TECHNIQUES CONTAINED IN THIS DRAWING ARE PROPRIETARY INFORMATION OF VALMONT INDUSTRIES AND CONSIDERED A TRADE SECRET. ANY USE OR DISCLOSURE WITHOUT THE CONSENT OF VALMONT INDUSTRIES IS STRICTLY PROHIBITED.</div>			<div>CLASS</div> <div>87</div>	<div>SUB</div> <div>02</div>	<div>DRAWING USAGE</div> <div>CUSTOMER</div>		<div>CHECKED BY</div> <div>CSL 1/15/2025</div>		<div>DWG. NO.</div> <div>FX3P14-NPNH</div>	

PARTS LIST						
ITEM	QTY	PART NO.	PART DESCRIPTION	LENGTH	UNIT WT.	NET WT.
1	1	X-F3PHRW	CORNER WELDMENT FOR 3-SIDED FORTRESS PLATFORM HADNRAIL KITS	28 1/2 in	27.72	27.72
2	2	X-UB5300	5/8" X 3" X 5-1/4" X 2-1/2" U-BOLT	5 1/4 in	1.22	2.43
3	2	X-UB5258	5/8 X 2-5/8" X 4-1/2" X 2" U-BOLT	4 1/2 in	1.06	2.12
4	4	G58FW	5/8" HDG USS FLATWASHER	1/8 in	0.07	0.28
5	4	G58LW	5/8" HDG LOCKWASHER		0.03	0.10
6	4	G58NUT	5/8" HDG HEAVY 2H HEX NUT		0.13	0.52
					TOTAL WT. #	33.18

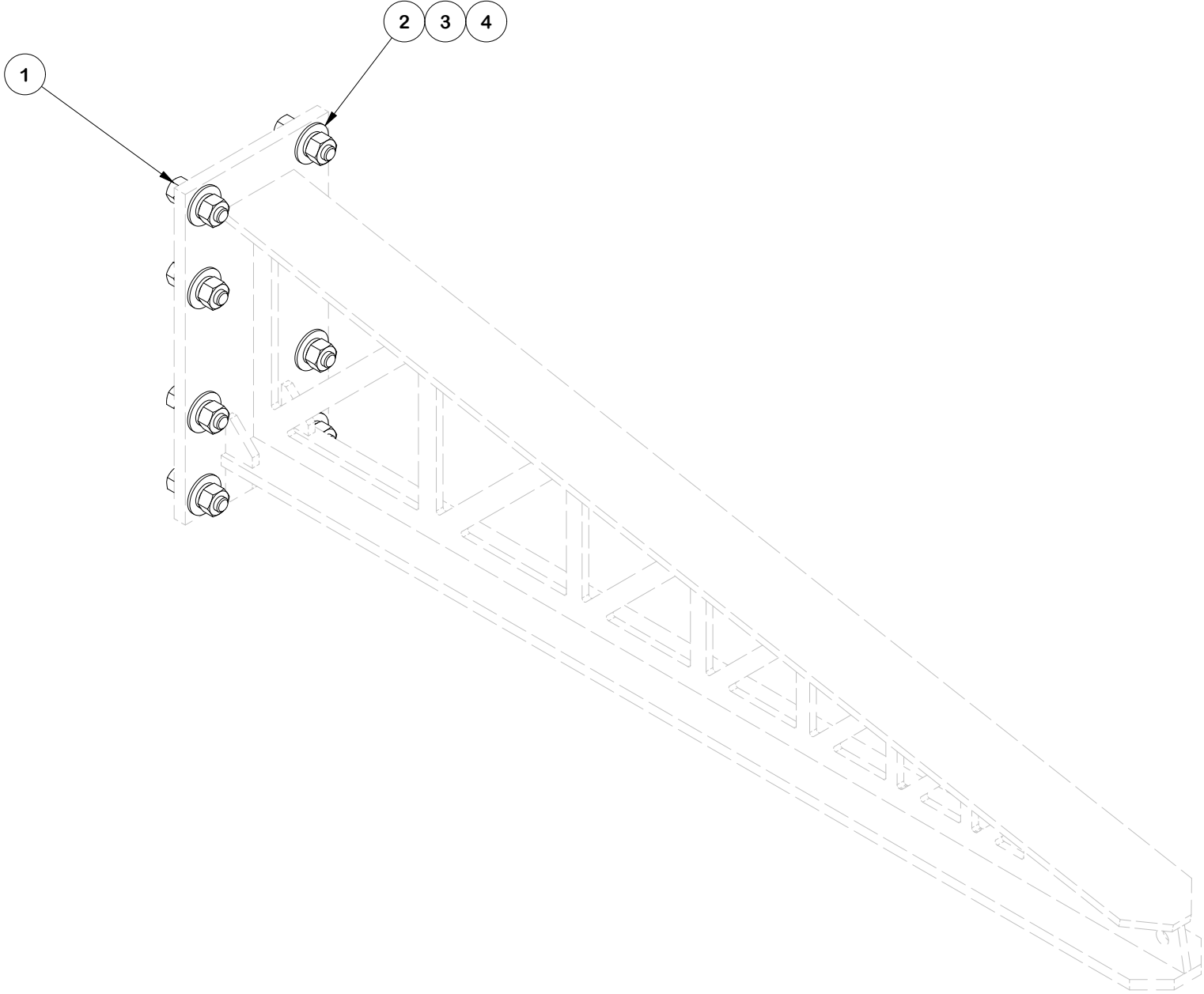


FINISH:
HOT DIP GALVANIZED.

	<div>TOLERANCE NOTES</div> <div>TOLERANCES ON DIMENSIONS, UNLESS OTHERWISE NOTED ARE: SAWED, SHEARED AND GAS CUT EDGES ($\pm 0.030''$) DRILLED AND GAS CUT HOLES ($\pm 0.030''$) - NO CONING OF HOLES LASER CUT EDGES AND HOLES ($\pm 0.010''$) - NO CONING OF HOLES BENDS AND ANGLES ARE $\pm 1/2$ DEGREE ALL OTHER MACHINING ($\pm 0.030''$) ALL OTHER ASSEMBLY ($\pm 0.060''$)</div>			<div>DESCRIPTION</div> <div>15' FLEX FORTRESS™ TRI-PLATFORM MOUNT WITH SUPPORT RAIL (NO PIPE/HARDWARE)</div>			<div><div><div>SITE PRO 1</div><div>A valmont COMPANY</div></div><div>Engineering Support Team: sp1engineering@valmont.com</div></div>		
	PATENT INFORMATION: WWW.SITEPRO1.COM/PATENTS			CPD NO. SP1	DRAWN BY ADB 1/8/2025	ENG. APPROVAL 1/15/2025	PART NO. F3HR		
	PROPRIETARY NOTE: THE DATA AND TECHNIQUES CONTAINED IN THIS DRAWING ARE PROPRIETARY INFORMATION OF VALMONT INDUSTRIES AND CONSIDERED A TRADE SECRET. ANY USE OR DISCLOSURE WITHOUT THE CONSENT OF VALMONT INDUSTRIES IS STRICTLY PROHIBITED.			CLASS 87	SUB 02	DRAWING USAGE CUSTOMER	CHECKED BY CSL 1/15/2025	DWG. NO. FX3P14-NPNH	

PAGE
10 OF 19

PARTS LIST					
ITEM	QTY	PART NO.	PART DESCRIPTION	LENGTH	UNIT WT.
1	8	G58214	5/8" x 2-1/4" HDG HEX BOLT GR5		0.29
2	8	G58FW	5/8" HDG USS FLATWASHER	1/8 in	0.07
3	8	G58LW	5/8" HDG LOCKWASHER		0.03
4	8	G58NUT	5/8" HDG HEAVY 2H HEX NUT		0.13
				TOTAL WT. #	4.14



TOLERANCE NOTES

TOLERANCES ON DIMENSIONS, UNLESS OTHERWISE NOTED ARE:
SAWED, SHEARED AND GAS CUT EDGES ($\pm 0.030''$)
DRILLED AND GAS CUT HOLES ($\pm 0.030''$) - NO CONING OF HOLES
LASER CUT EDGES AND HOLES ($\pm 0.010''$) - NO CONING OF HOLES
BENDS AND ANGLES ARE $\pm 1/2$ DEGREE
ALL OTHER MACHINING ($\pm 0.030''$)
ALL OTHER ASSEMBLY ($\pm 0.060''$)

PATENT INFORMATION: WWW.SITEPRO1.COM/PATENTS

PROPRIETARY NOTE:
THE DATA AND TECHNIQUES CONTAINED IN THIS DRAWING ARE PROPRIETARY INFORMATION OF VALMONT INDUSTRIES AND CONSIDERED A TRADE SECRET. ANY USE OR DISCLOSURE WITHOUT THE CONSENT OF VALMONT INDUSTRIES IS STRICTLY PROHIBITED.

DESCRIPTION
15' FLEX FORTRESS™ TRI-PLATFORM MOUNT
WITH SUPPORT RAIL
(NO PIPE/HARDWARE)

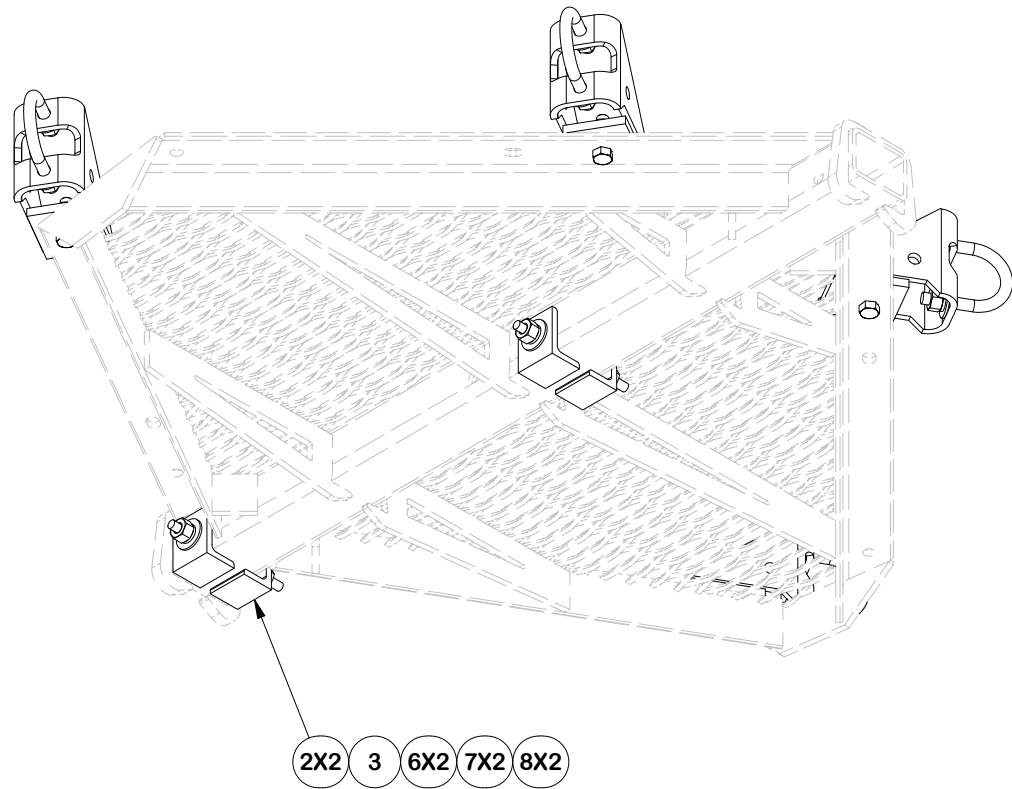
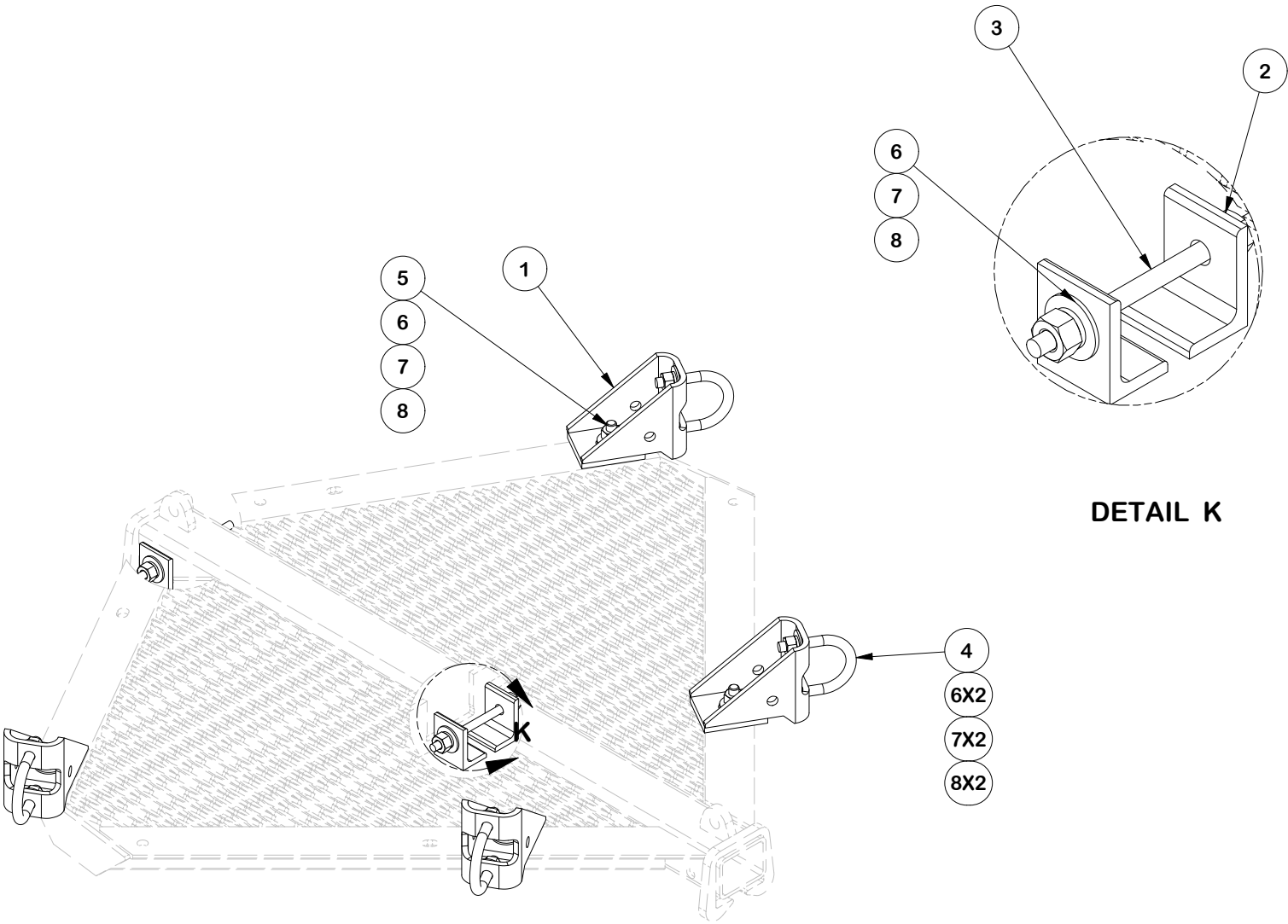
CPD NO. SP1		DRAWN BY ADB 1/8/2025	ENG. APPROVAL 1/15/2025
CLASS 87	SUB 02	DRAWING USAGE CUSTOMER	CHECKED BY CSL 1/15/2025



Engineering
Support Team:
sp1engineering@valmont.com

PART NO. LPPSA-HW	PAGE 11 OF 19
DWG. NO. FX3P14-NPNH	

PARTS LIST						
ITEM	QTY	PART NO.	PART DESCRIPTION	LENGTH	UNIT WT.	NET WT.
1	4	X-LPP-PC	FACE PIPE CONNECTION BRACKET FORTRESS PLATFORM		7.01	28.04
2	4	X-LPP-A7	CORNER WELDMENT ATTACHMENT ANGLE	2 1/2 in	1.27	5.08
3	2	G12R-8	1/2" x 8" THREADED ROD (HDG.)		0.45	0.89
4	4	X-UB5304	5/8" X 3" X 4-1/4" X 2-1/2" U-BOLT	4 1/4 in	1.03	4.13
5	4	G58214	5/8" x 2-1/4" HDG HEX BOLT GR5		0.29	1.17
6	16	G58FW	5/8" HDG USS FLATWASHER	1/8 in	0.07	1.13
7	16	G58LW	5/8" HDG LOCKWASHER		0.03	0.42
8	16	G58NUT	5/8" HDG HEAVY 2H HEX NUT		0.13	2.08
					TOTAL WT. #	42.70



REPRESENTATION VIEW FOR
3-SIDED FORTRESS

TOLERANCE NOTES

TOLERANCES ON DIMENSIONS, UNLESS OTHERWISE NOTED ARE:
SAWED, SHEARED AND GAS CUT EDGES ($\pm 0.030"$)
DRILLED AND GAS CUT HOLES ($\pm 0.030"$) - NO CONING OF HOLES
LASER CUT EDGES AND HOLES ($\pm 0.010"$) - NO CONING OF HOLES
BENDS AND ANGLES ARE $\pm 1/2$ DEGREE
ALL OTHER MACHINING ($\pm 0.030"$)
ALL OTHER ASSEMBLY ($\pm 0.060"$)

PATENT INFORMATION: WWW.SITEPRO1.COM/PATENTS

PROPRIETARY NOTE:
THE DATA AND TECHNIQUES CONTAINED IN THIS DRAWING ARE PROPRIETARY INFORMATION OF VALMONT INDUSTRIES AND CONSIDERED A TRADE SECRET. ANY USE OR DISCLOSURE WITHOUT THE CONSENT OF VALMONT INDUSTRIES IS STRICTLY PROHIBITED.

DESCRIPTION
15' FLEX FORTRESS™ TRI-PLATFORM MOUNT
WITH SUPPORT RAIL
(NO PIPE/HARDWARE)

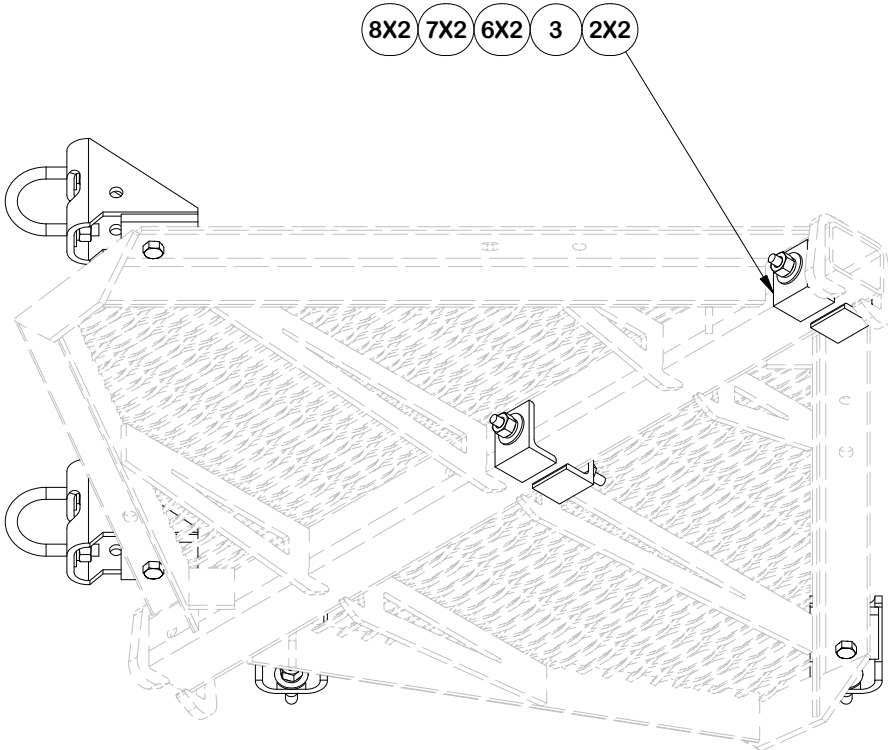
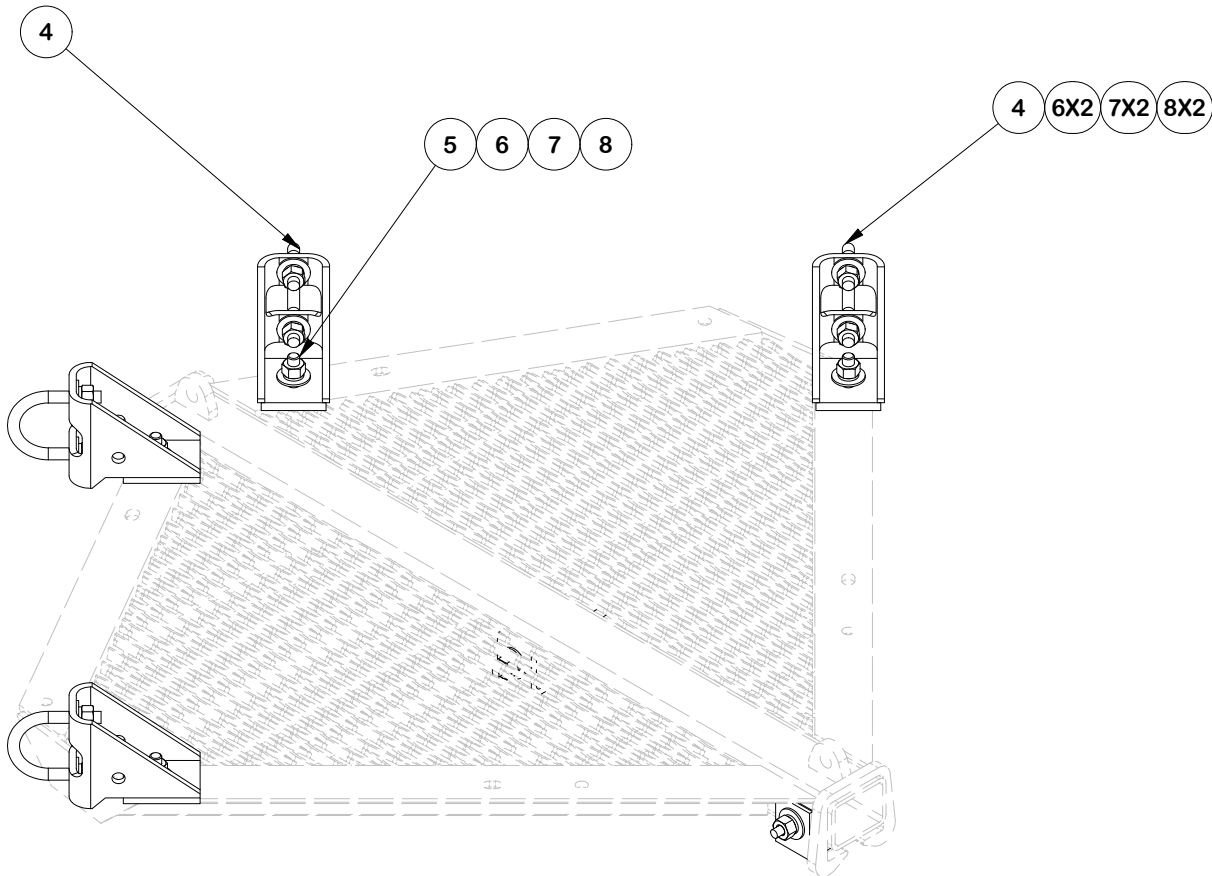
CPD NO. SP1		DRAWN BY ADB 1/8/2025		ENG. APPROVAL 1/15/2025	
CLASS 87	SUB 02	DRAWING USAGE CUSTOMER		CHECKED BY CSL	1/15/2025



Engineering
Support Team:
sp1engineering@valmont.com

PART NO. FCWHW	PAGE 12 OF 19
DWG. NO. FX3P14-NPNH	

NOTE: FOR 4-SIDED ASSEMBLY, ONLY POSITION OF FACE PIPE CONNECTION BRACKET CHANGES



REPRESENTATION VIEW FOR
4-SIDED FORTRESS

TOLERANCE NOTES

TOLERANCES ON DIMENSIONS, UNLESS OTHERWISE NOTED ARE:
SAWED, SHEARED AND GAS CUT EDGES ($\pm 0.030"$)
DRILLED AND GAS CUT HOLES ($\pm 0.030"$) - NO CONING OF HOLES
LASER CUT EDGES AND HOLES ($\pm 0.010"$) - NO CONING OF HOLES
BENDS AND ANGLES ARE $\pm 1/2$ DEGREE
ALL OTHER MACHINING ($\pm 0.030"$)
ALL OTHER ASSEMBLY ($\pm 0.060"$)

PATENT INFORMATION: WWW.SITEPRO1.COM/PATENTS

PROPRIETARY NOTE:
THE DATA AND TECHNIQUES CONTAINED IN THIS DRAWING ARE PROPRIETARY INFORMATION OF VALMONT INDUSTRIES AND CONSIDERED A TRADE SECRET. ANY USE OR DISCLOSURE WITHOUT THE CONSENT OF VALMONT INDUSTRIES IS STRICTLY PROHIBITED.

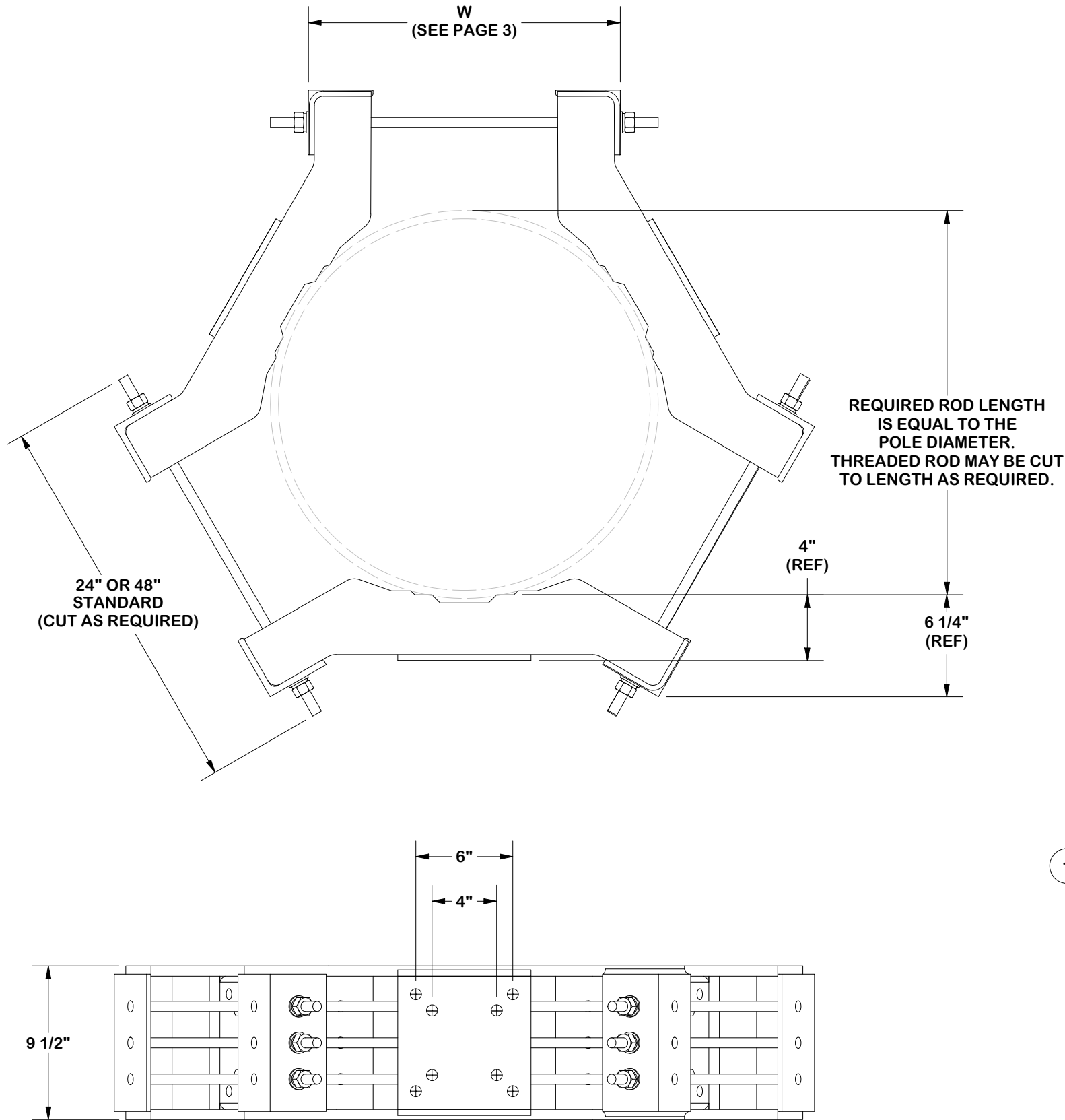
DESCRIPTION
15' FLEX FORTRESS™ TRI-PLATFORM MOUNT
WITH SUPPORT RAIL
(NO PIPE/HARDWARE)

CPD NO. SP1		DRAWN BY ADB 1/8/2025	ENG. APPROVAL 1/15/2025
CLASS 87	SUB 02	DRAWING USAGE CUSTOMER	CHECKED BY CSL 1/15/2025

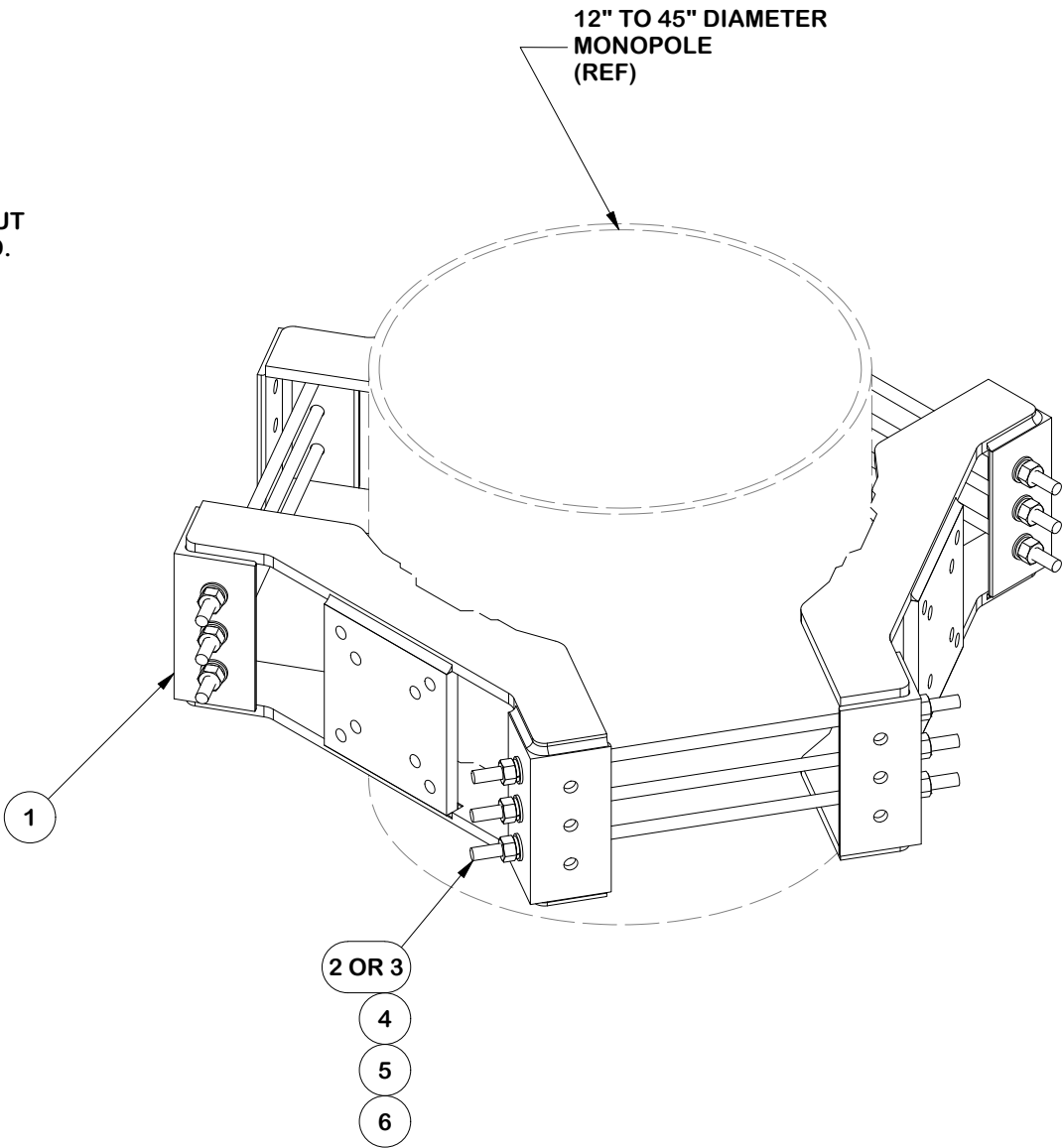


Engineering
Support Team:
sp1engineering@valmont.com


PART NO. FCWHW	DWG. NO. FX3P14-NPNH
-------------------	-------------------------

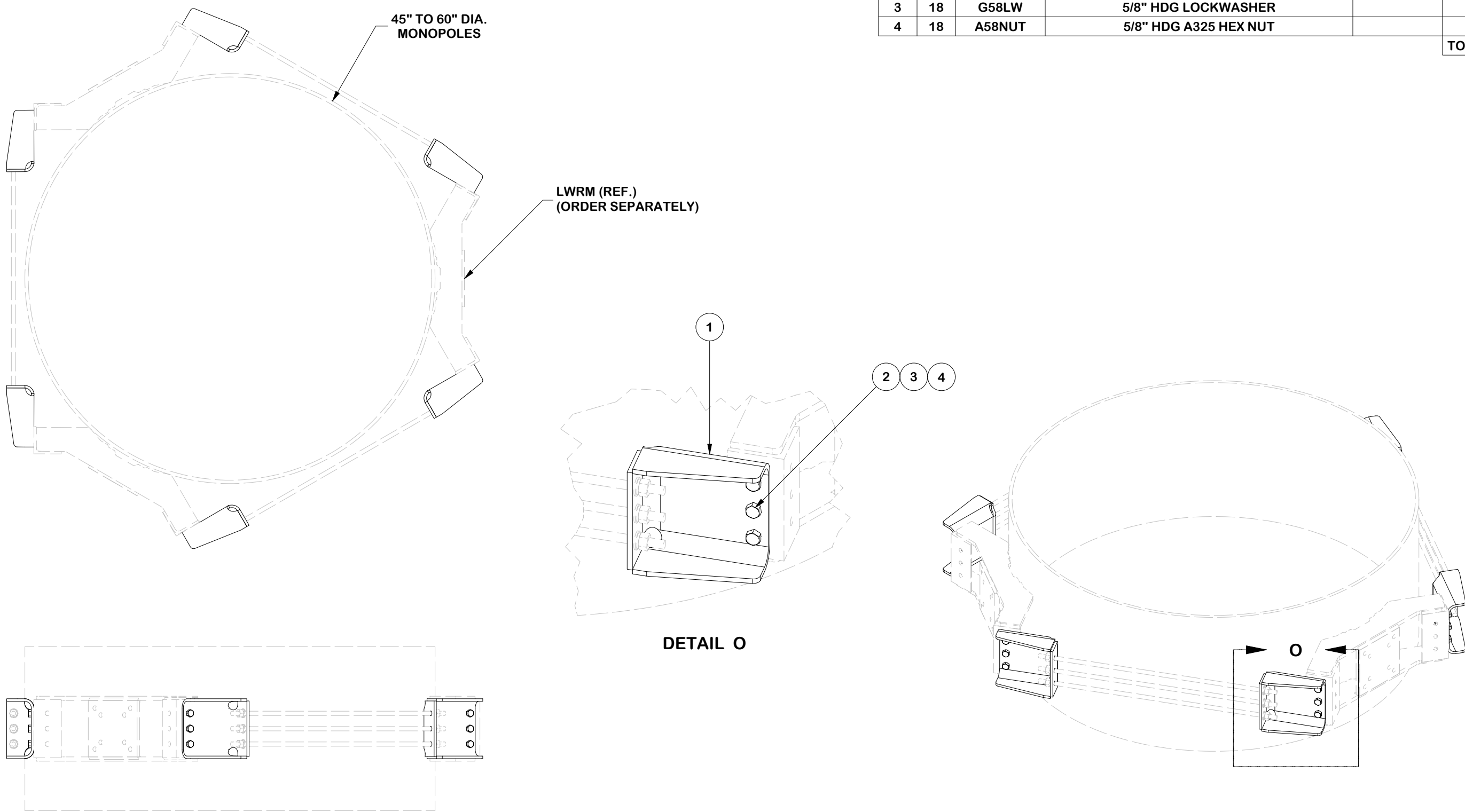


PARTS LIST					
ITEM	QTY	PART NO.	PART DESCRIPTION	LENGTH	UNIT WT.
1	3	X-LWRM	RING MOUNT WELDMENT		69.02
2	9	G58R-48	5/8" x 48" THREADED ROD (HDG.)		4.18
3	9	G58R-24	5/8" x 24" THREADED ROD (HDG.)		2.09
4	18	A58FW	5/8" HDG A325 FLATWASHER		0.03
5	18	G58LW	5/8" HDG LOCKWASHER		0.03
6	18	A58NUT	5/8" HDG A325 HEX NUT		0.13
TOTAL WT. #					264.35



FINISH:
HOT DIP GALVANIZED.

					<div>TOLERANCE NOTES</div> <div>TOLERANCES ON DIMENSIONS, UNLESS OTHERWISE NOTED ARE: SAWED, SHEARED AND GAS CUT EDGES ($\pm 0.030''$) DRILLED AND GAS CUT HOLES ($\pm 0.030''$) - NO CONING OF HOLES LASER CUT EDGES AND HOLES ($\pm 0.010''$) - NO CONING OF HOLES BENDS AND ANGLES ARE $\pm 1/2$ DEGREE ALL OTHER MACHINING ($\pm 0.030''$) ALL OTHER ASSEMBLY ($\pm 0.060''$)</div>			<div>DESCRIPTION</div> <div>15' FLEX FORTRESS™ TRI-PLATFORM MOUNT WITH SUPPORT RAIL (NO PIPE/HARDWARE)</div>			<div><div><div>SITE PRO</div><div>1</div></div><div>Engineering Support Team: sp1engineering@valmont.com</div></div> <div>A valmont  COMPANY</div>										
A	CHANGED KITS				SP1	ADB	12/12/2024	CPD NO.		DRAWN BY		ENG. APPROVAL		PART NO.		14 OF 19 PAGE					
REV	DESCRIPTION OF REVISIONS				CPD	BY	DATE	SP1		ADB 1/8/2025		1/15/2025		LWRM							
REVISION HISTORY								PATENT INFORMATION: WWW.SITEPRO1.COM/PATENTS				CLASS		SUB			DRAWING USAGE		CHECKED BY		DWG. NO.
												87		02		CUSTOMER		CSL 1/15/2025		FX3P14-NPNH	
								PROPRIETARY NOTE: THE DATA AND TECHNIQUES CONTAINED IN THIS DRAWING ARE PROPRIETARY INFORMATION OF VALMONT INDUSTRIES AND CONSIDERED A TRADE SECRET. ANY USE OR DISCLOSURE WITHOUT THE CONSENT OF VALMONT INDUSTRIES IS STRICTLY PROHIBITED.													



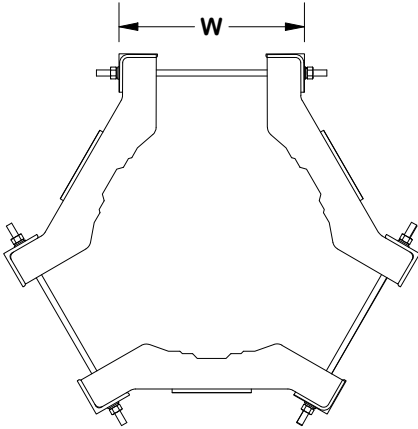
PARTS LIST					
ITEM	QTY	PART NO.	PART DESCRIPTION	LENGTH	UNIT WT.
1	6	X-178627	BENT EXTENSION BRACKET	15 in	15.94
2	18	A5802	5/8" x 2" HDG A325 HEX BOLT		0.27
3	18	G58LW	5/8" HDG LOCKWASHER		0.03
4	18	A58NUT	5/8" HDG A325 HEX NUT		0.13
				TOTAL WT. #	105.90

					<div>TOLERANCE NOTES</div> <div>TOLERANCES ON DIMENSIONS, UNLESS OTHERWISE NOTED ARE: SAWED, SHEARED AND GAS CUT EDGES ($\pm 0.030''$) DRILLED AND GAS CUT HOLES ($\pm 0.030''$) - NO CONING OF HOLES LASER CUT EDGES AND HOLES ($\pm 0.010''$) - NO CONING OF HOLES BENDS AND ANGLES ARE $\pm 1/2$ DEGREE ALL OTHER MACHINING ($\pm 0.030''$) ALL OTHER ASSEMBLY ($\pm 0.060''$)</div>		<div>DESCRIPTION</div> <div>15' FLEX FORTRESS™ TRI-PLATFORM MOUNT WITH SUPPORT RAIL (NO PIPE/HARDWARE)</div>			<div><div><div>SITE PRO 1</div><div>A valmont COMPANY</div></div><div>Engineering Support Team: sp1engineering@valmont.com</div></div>							
A	CHANGED KITS				SP1	ADB	12/12/2024										
REV	DESCRIPTION OF REVISIONS				CPD	BY	DATE										
REVISION HISTORY								PATENT INFORMATION: WWW.SITEPRO1.COM/PATENTS									
								CPD NO. SP1		DRAWN BY ADB 1/8/2025		ENG. APPROVAL 1/15/2025		PART NO. RM-ADK		15 OF 19 PAGE	
								CLASS 87		SUB 02		DRAWING USAGE CUSTOMER		CHECKED BY CSL 1/15/2025			DWG. NO. FX3P14-NPNH
								PROPRIETARY NOTE: THE DATA AND TECHNIQUES CONTAINED IN THIS DRAWING ARE PROPRIETARY INFORMATION OF VALMONT INDUSTRIES AND CONSIDERED A TRADE SECRET. ANY USE OR DISCLOSURE WITHOUT THE CONSENT OF VALMONT INDUSTRIES IS STRICTLY PROHIBITED.									


A	CHANGED KITS	SP1	ADB	12/12/2024
REV	DESCRIPTION OF REVISIONS	CPD	BY	DATE
REVISION HISTORY				

NOTES:

- VALMONT IS SUPPLYING THE VALUE OF THE "W" DIMENSIONS TO ASSIST THE ERECTOR IN PRE-ASSEMBLING THE CLAMPS & THREADED RODS.
- THE CIRCUMFERENCE IS THE DISTANCE MEASURED AROUND THE OUTSIDE OF THE POLE AT THE LOCATION OF THE CLAMP.

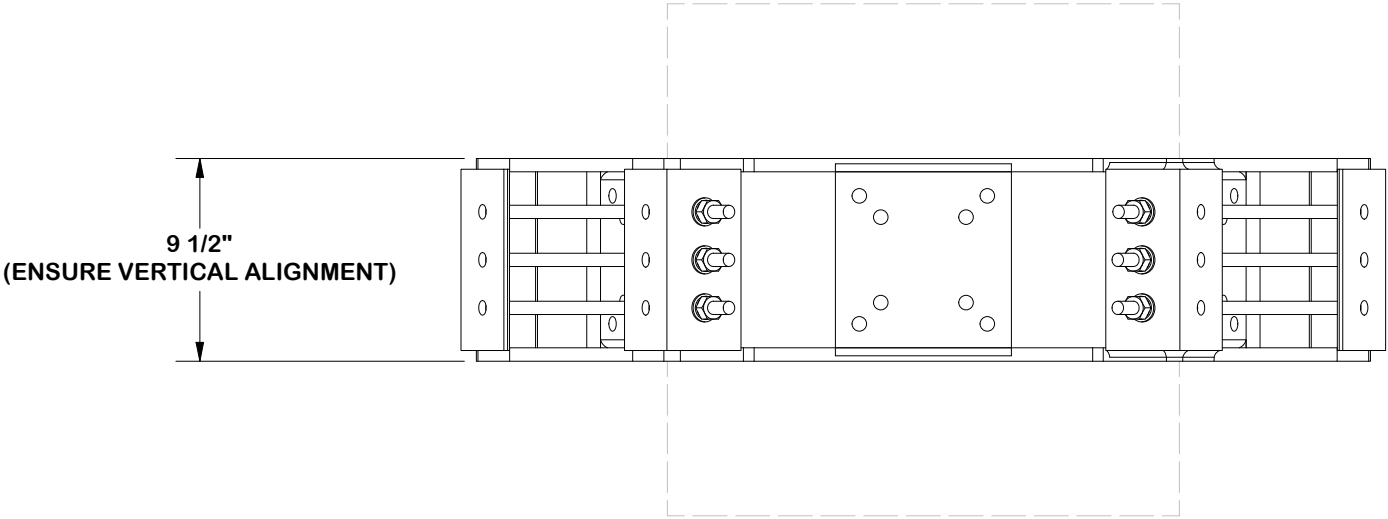
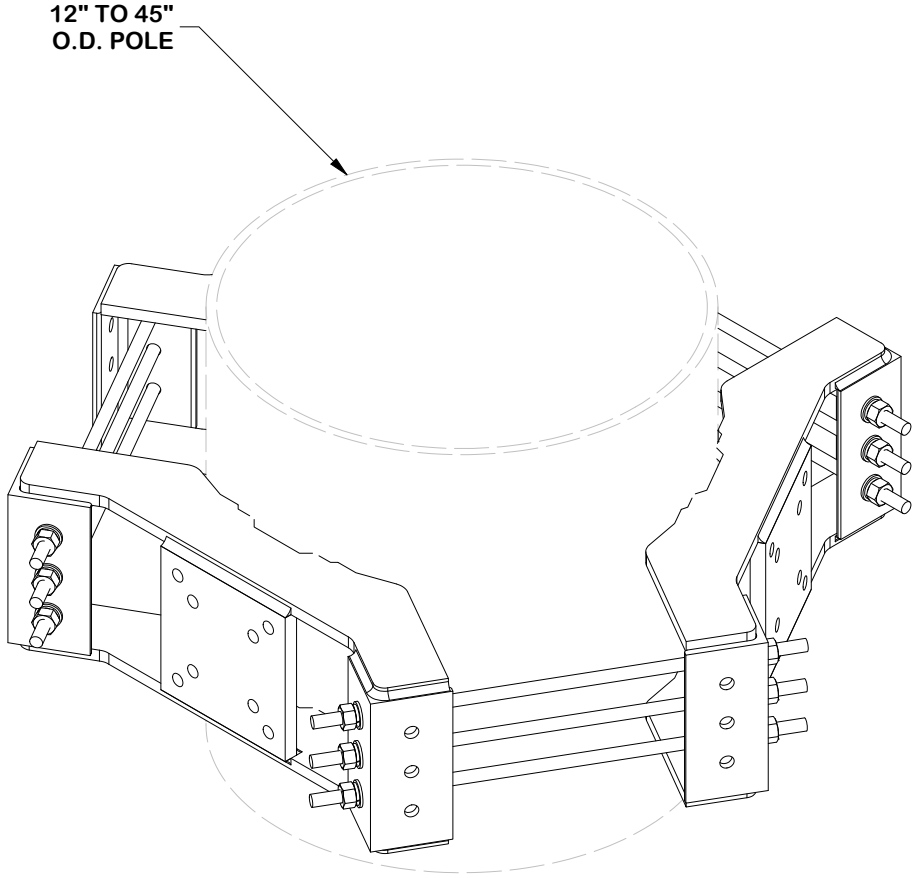
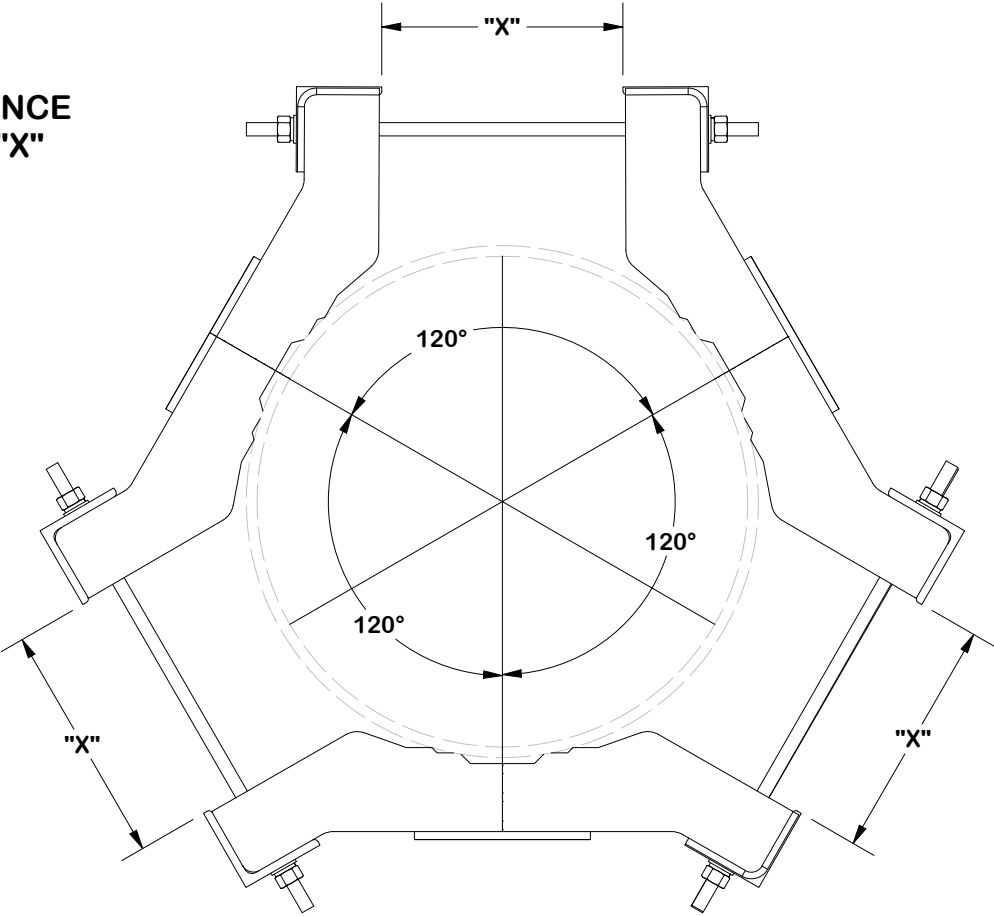



CIRCUMF	DIA (REF)	W	CIRCUMF	DIA (REF)	W	CIRCUMF	DIA (REF)	W	CIRCUMF	DIA (REF)	W	CIRCUMF	DIA (REF)	W	CIRCUMF	DIA (REF)	W
38"	12-1/8"	9-3/16"	63"	20-1/16"	16-3/16"	88"	28"	23-3/16"	113"	36"	30-3/16"	138'	43-15/16"	37-1/4"	163"	51-7/8"	44-5/16"
39"	12-7/16"	9-7/16"	64"	20-3/8"	16-7/16"	89"	28-5/16"	23-1/2"	114"	36-5/16"	30-1/2"	139"	44-1/4"	37-1/2"	164"	52-3/16"	44-9/16"
40"	12-3/4"	9-3/4"	65"	20-11/16"	16-3/4"	90"	28-5/8"	23-3/4"	115"	36-5/8"	30-3/4"	140"	44-9/16"	37-13/16"	165'	52-1/2"	44-7/8"
41"	13-1/16"	10"	66"	21"	17"	91"	28-15/16"	24-1/16"	116"	36-15/16"	31-1/16"	141"	44-7/8"	38-1/16"	166"	52-13/16"	45-3/16"
42"	13-3/8"	10-5/16"	67"	21-5/16"	17-5/16'	92"	29-5/16"	24-5/16"	117"	37-1/4"	31-5/16"	142"	45-3/16"	38-3/8"	167"	53-3/16"	45-7/16"
43"	13-11/16"	10-9/16"	68"	21-5/8"	17-9/16"	93"	29-5/8"	24-5/8"	118"	37-9/16"	31-5/8"	143"	45-1/2"	38-9/16"	168"	53-1/2"	45-3/4"
44"	14"	10-7/8"	69"	21-15/16"	17-7/8"	94"	29-15/16"	24-7/8"	119"	37-7/8"	31-7/8"	144"	45-13/16"	38-7/8"	169"	53-13/16"	46"
45"	14-5/16"	11-2/16"	70"	22-5/16"	18-1/8"	95"	30-1/4"	25-1/8"	120"	38-3/16"	32-3/16"	145"	46-1/8"	39-1/8"	170"	54-1/8"	465/16"
46"	14-5/8"	11-3/8"	71"	22-5/8"	18-7/16"	96"	30-9/16"	25-7/16"	121"	38-1/2"	32-7/16"	146"	46-1/2"	39-7/16"	171"	54-7/16"	46-9/16"
47"	14-15/16"	11-11/16"	72"	22-15/16"	18-11/16"	97"	30-7/8"	25-11/16"	122"	38-13/16"	32-3/4"	147"	46-13/16"	39-3/4"	172"	54-3/4"	46-7/8"
48"	15-1/4"	11-15/16"	73"	23-1/4"	19"	98"	31-3/16"	26"	123"	39-1/8"	33"	148"	47-1/8"	40"	173"	55-1/16"	47-1/8"
49"	15-5/8"	12-1/4"	74"	23-9/16"	19-1/4"	99"	31-1/2"	26-1/4"	124"	39-1/2"	33-5/16"	149"	47-7/16"	40-5/16"	174"	55-3/8"	47-7/16"
50"	15-15/16"	12-1/2"	75"	23-7/8"	19-9/16"	100"	31-13/16"	26-9/16"	125"	39-13/16"	33-9/16"	150"	47-3/4"	40-9/16"	175"	55-11/16"	47-11/16"
51"	16-1/4"	12-13/16"	76"	24-1/4"	19-13/16"	101"	32-1/8"	26-13/16"	126"	40-1/8"	33-7/8"	151"	48-1/16"	40-7/8"	176"	56"	48"
52"	16-9/16"	13-1/16"	77"	24-1/2"	20-1/8"	102"	32-7/16"	27"	127"	40-7/16"	34-1/8"	152"	48-3/8"	41-3/16"	177"	56-5/16"	48-1/4"
53"	16-7/8"	13-3/8"	78"	24-13/16"	20-3/8"	103"	32-13/16"	27-3/8"	128"	40-3/4"	34-7/16"	153"	48-11/16"	41-7/16"	178"	56-11/16"	48-9/16"
54"	17-3/16"	13-5/8"	79"	25-1/8"	20-11/16"	104"	33-1/8"	27-11/16"	129"	41-1/16"	31-11/16"	154'	49"	41-3/4"	179"	57"	48-7/8"
55"	17-1/2"	13-15/16"	80"	25-7/16'	20-15/16"	105"	33-7/16"	27-15/16"	130"	41-3/8"	35"	155"	49-5/16"	42"	180"	57-5/16"	49-1/8"
56"	17-13/16"	14-3/16"	81"	25-13/16"	21-1/4"	106"	33-3/4"	28-1/4"	131"	41-11/16"	35-1/4"	156"	49-11/16"	42-5/16"	181"	57-5/8"	49-7/16"
57"	18-1/8"	14-1/2"	82"	26-1/8"	21-1/2"	107"	34-1/16"	28-1/2"	132"	42"	35-9/16"	157"	50"	42-5/8"	182"	57-15/16"	49-11/16"
58"	18-7/16"	14-3/4"	83"	26-7/16"	21-13/16"	108"	34-3/8"	28-13/16"	133"	42-5/16"	35-13/16"	158"	50-5/16"	42-7/8"	183"	58-1/4"	50"
59"	18-3/4"	15-1/16"	84"	26-3/4"	22-1/16"	109"	34-11/16"	29-1/16"	134"	42-5/8"	36-1/8"	159"	50-5/8"	43-3/16"	184"	58-9/16"	50-1/4"
60"	19-1/8"	15-5/16"	85"	27-1/16"	22-3/8"	110"	35"	29-3/8"	135"	43"	36-3/8"	160"	50-15/16"	43-7/16"	185"	58-7/8"	50-9/16"
61"	19-7/16"	15-5/8"	86"	27-3/8"	22-5/8"	111"	35-5/16"	29-5/8"	136"	43-5/16"	36-11/16"	161"	51-1/4"	43-3/4"	186"	59-3/16"	50-13/16"
62"	19-3/4"	15-7/8"	87"	27-11/16"	22-15/16"	112"	35-5/8"	29-15/16"	137"	43-5/8"	36-15/16"	162"	51-9/16"	44"	187"	59-1/2"	51"
															188"	59-13/16"	51-3/8"
															189"	60-3/16"	51-11/16"

					<div>TOLERANCE NOTES</div> <div>TOLERANCES ON DIMENSIONS, UNLESS OTHERWISE NOTED ARE: SAWED, SHEARED AND GAS CUT EDGES ($\pm 0.030''$) DRILLED AND GAS CUT HOLES ($\pm 0.030''$) - NO CONING OF HOLES LASER CUT EDGES AND HOLES ($\pm 0.010''$) - NO CONING OF HOLES BENDS AND ANGLES ARE $\pm 1/2$ DEGREE ALL OTHER MACHINING ($\pm 0.030''$) ALL OTHER ASSEMBLY ($\pm 0.060''$)</div>					<div>DESCRIPTION</div> <div>15' FLEX FORTRESS™ TRI-PLATFORM MOUNT WITH SUPPORT RAIL (NO PIPE/HARDWARE)</div>					<div><div><div>SITE PRO</div><div>1</div></div><div>Engineering Support Team: sp1engineering@valmont.com</div></div> <div>A valmont  COMPANY</div>				
A	CHANGED KITS				SP1	ADB	12/12/2024												
REV	DESCRIPTION OF REVISIONS				CPD	BY	DATE												
REVISION HISTORY									PATENT INFORMATION: WWW.SITEPRO1.COM/PATENTS										
									PROPRIETARY NOTE: THE DATA AND TECHNIQUES CONTAINED IN THIS DRAWING ARE PROPRIETARY INFORMATION OF VALMONT INDUSTRIES AND CONSIDERED A TRADE SECRET. ANY USE OR DISCLOSURE WITHOUT THE CONSENT OF VALMONT INDUSTRIES IS STRICTLY PROHIBITED.										
									CPD NO. SP1		DRAWN BY ADB 1/8/2025		ENG. APPROVAL 1/15/2025		PART NO. LWRM			16 OF 19 PAGE	
									CLASS 87	SUB 02	DRAWING USAGE CUSTOMER		CHECKED BY CSL 1/15/2025		DWG. NO. FX3P14-NPNH				

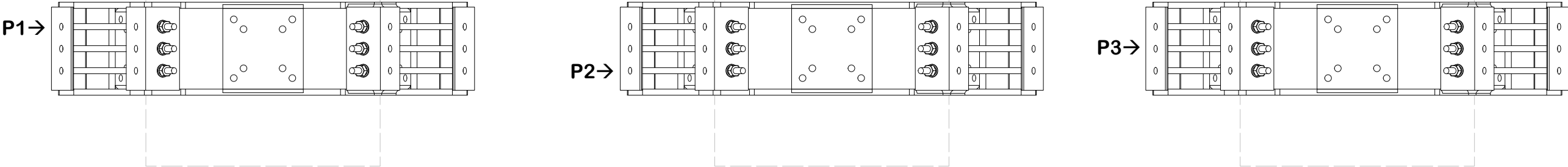
NOTE:

ENSURE EQUAL DISTANCE
BETWEEN BRACKETS "X"
AND AT 120° APART

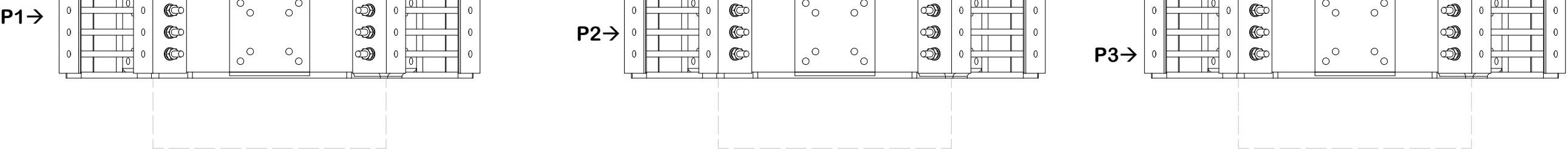


					<div>TOLERANCE NOTES</div> <div>TOLERANCES ON DIMENSIONS, UNLESS OTHERWISE NOTED ARE: SAWED, SHEARED AND GAS CUT EDGES ($\pm 0.030''$) DRILLED AND GAS CUT HOLES ($\pm 0.030''$) - NO CONING OF HOLES LASER CUT EDGES AND HOLES ($\pm 0.010''$) - NO CONING OF HOLES BENDS AND ANGLES ARE $\pm 1/2$ DEGREE ALL OTHER MACHINING ($\pm 0.030''$) ALL OTHER ASSEMBLY ($\pm 0.060''$)</div>			<div>DESCRIPTION</div> <div>15' FLEX FORTRESS™ TRI-PLATFORM MOUNT WITH SUPPORT RAIL (NO PIPE/HARDWARE)</div>			<div><div><div>SITE PRO</div><div>1</div></div><div>Engineering Support Team: sp1engineering@valmont.com</div></div> <div>A valmont  COMPANY</div>										
A	CHANGED KITS				SP1	ADB	12/12/2024														
REV	DESCRIPTION OF REVISIONS				CPD	BY	DATE		CPD NO.		DRAWN BY		ENG. APPROVAL		PART NO.		17 OF 19 PAGE				
REVISION HISTORY								PATENT INFORMATION: WWW.SITEPRO1.COM/PATENTS				SP1		ADB 1/8/2025		1/15/2025		LWRM			
								PROPRIETARY NOTE: THE DATA AND TECHNIQUES CONTAINED IN THIS DRAWING ARE PROPRIETARY INFORMATION OF VALMONT INDUSTRIES AND CONSIDERED A TRADE SECRET. ANY USE OR DISCLOSURE WITHOUT THE CONSENT OF VALMONT INDUSTRIES IS STRICTLY PROHIBITED.				CLASS 87		SUB 02		DRAWING USAGE CUSTOMER		CHECKED BY CSL 1/15/2025		DWG. NO. FX3P14-NPNH	

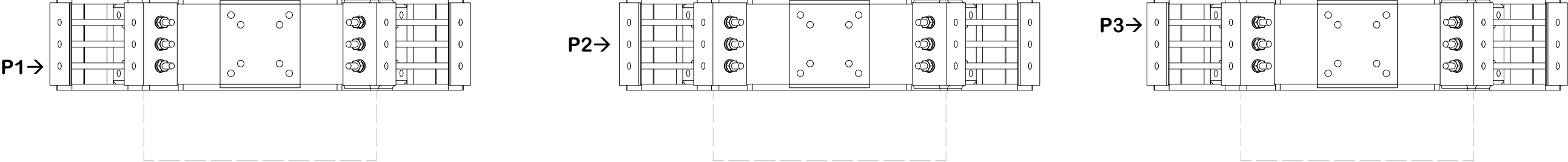
INSTALL ORDER




INITIAL TIGHTENING

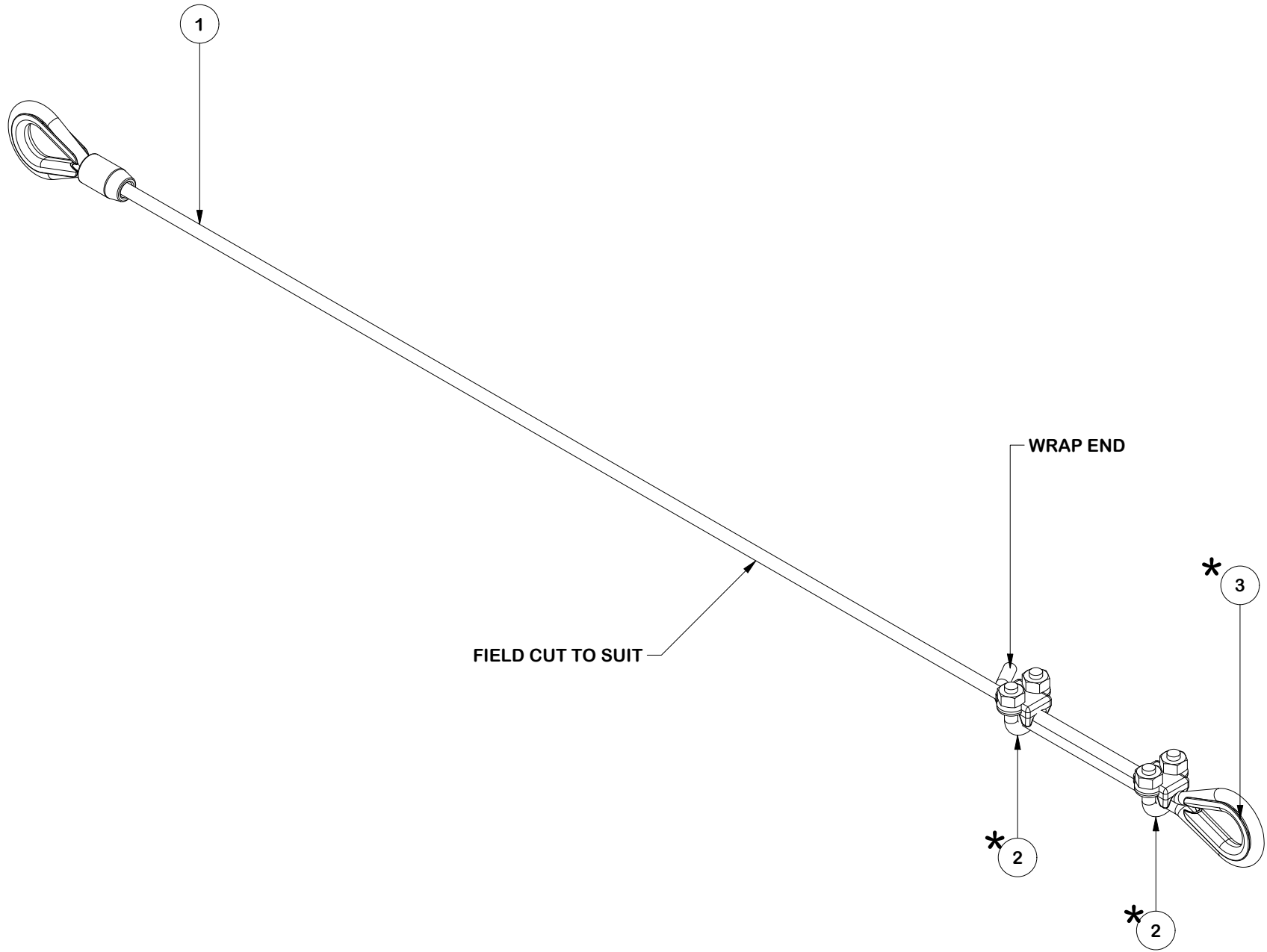


FINAL TIGHTENING



					<div>TOLERANCE NOTES</div> <div>TOLERANCES ON DIMENSIONS, UNLESS OTHERWISE NOTED ARE: SAWED, SHEARED AND GAS CUT EDGES (± 0.030") DRILLED AND GAS CUT HOLES (± 0.030") - NO CONING OF HOLES LASER CUT EDGES AND HOLES (± 0.010") - NO CONING OF HOLES BENDS AND ANGLES ARE ± 1/2 DEGREE ALL OTHER MACHINING (± 0.030") ALL OTHER ASSEMBLY (± 0.060")</div>			<div>DESCRIPTION</div> <div>15' FLEX FORTRESS™ TRI-PLATFORM MOUNT WITH SUPPORT RAIL (NO PIPE/HARDWARE)</div>			<div><div><div>SITE PRO</div><div>1</div></div><div>Engineering Support Team: sp1engineering@valmont.com</div></div> <div>A valmont  COMPANY</div>														
A	CHANGED KITS				SP1	ADB	12/12/2024		CPD NO.		DRAWN BY		ENG. APPROVAL		PART NO.		18 OF 19 PAGE								
REV	DESCRIPTION OF REVISIONS				CPD	BY	DATE		SP1		ADB 1/8/2025		1/15/2025		LWRM										
REVISION HISTORY								PATENT INFORMATION: WWW.SITEPRO1.COM/PATENTS																	
								PROPRIETARY NOTE: THE DATA AND TECHNIQUES CONTAINED IN THIS DRAWING ARE PROPRIETARY INFORMATION OF VALMONT INDUSTRIES AND CONSIDERED A TRADE SECRET. ANY USE OR DISCLOSURE WITHOUT THE CONSENT OF VALMONT INDUSTRIES IS STRICTLY PROHIBITED.								CLASS		SUB		DRAWING USAGE		CHECKED BY		DWG. NO.	
																87		02		CUSTOMER		CSL 1/15/2025		FX3P14-NPNH	

PARTS LIST						
ITEM	QTY	PART NO.	PART DESCRIPTION	LENGTH	UNIT WT.	NET WT.
1	1	X-C3815	3/8" X 15'-0" CABLE W/ ONE THIMBLE SWAGED END	180 in	5.86	5.86
2	2	320153	CROSBY 3/8" WIRE ROPE CLIP		1.32	2.63
3	1	320778	CROSBY 3/8" THIMBLE		0.07	0.07
					TOTAL WT. #	8.56



* TO BE ASSEMBLED IN THE FIELD

					TOLERANCE NOTES	TOLERANCES ON DIMENSIONS, UNLESS OTHERWISE NOTED ARE: SAWED, SHEARED AND GAS CUT EDGES ($\pm 0.030''$) DRILLED AND GAS CUT HOLES ($\pm 0.030''$) - NO CONING OF HOLES LASER CUT EDGES AND HOLES ($\pm 0.010''$) - NO CONING OF HOLES BENDS AND ANGLES ARE $\pm 1/2$ DEGREE ALL OTHER MACHINING ($\pm 0.030''$) ALL OTHER ASSEMBLY ($\pm 0.060''$)	PROPRIETARY NOTE: THE DATA AND TECHNIQUES CONTAINED IN THIS DRAWING ARE PROPRIETARY INFORMATION OF VALMONT INDUSTRIES AND CONSIDERED A TRADE SECRET. ANY USE OR DISCLOSURE WITHOUT THE CONSENT OF VALMONT INDUSTRIES IS STRICTLY PROHIBITED.	DESCRIPTION 15' FLEX FORTRESS™ TRI-PLATFORM MOUNT WITH SUPPORT RAIL (NO PIPE/HARDWARE)		A SITE PRO 1 A valmont COMPANY		Locations: New York, NY Atlanta, GA Los Angeles, CA Plymouth, IN Salem, OR Dallas, TX Tampa, FL Engineering Support Team: 1-888-753-7446		
A	CHANGED KITS				SP1	ADB	12/12/2024							
REV	DESCRIPTION OF REVISIONS				CPD	BY	DATE							
REVISION HISTORY														
								CLASS	SUB	DRAWING USAGE	CHECKED BY	PART NO.		
								87	02	CUSTOMER	CSL 1/15/2025	CK-3815		
													DWG. NO.	
													FX3P14-NPNH	
													19 OF 19	